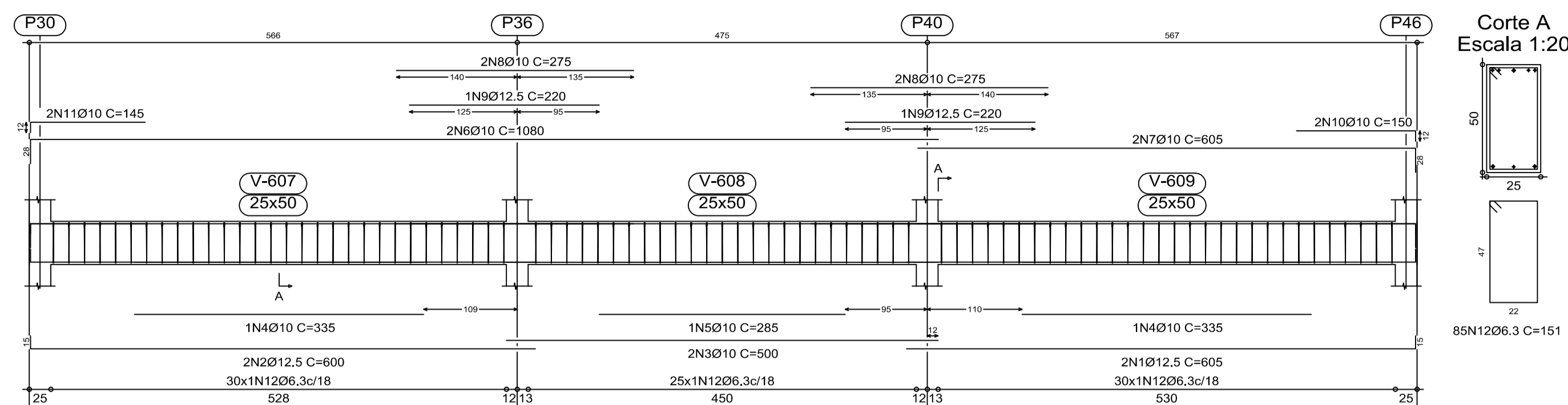
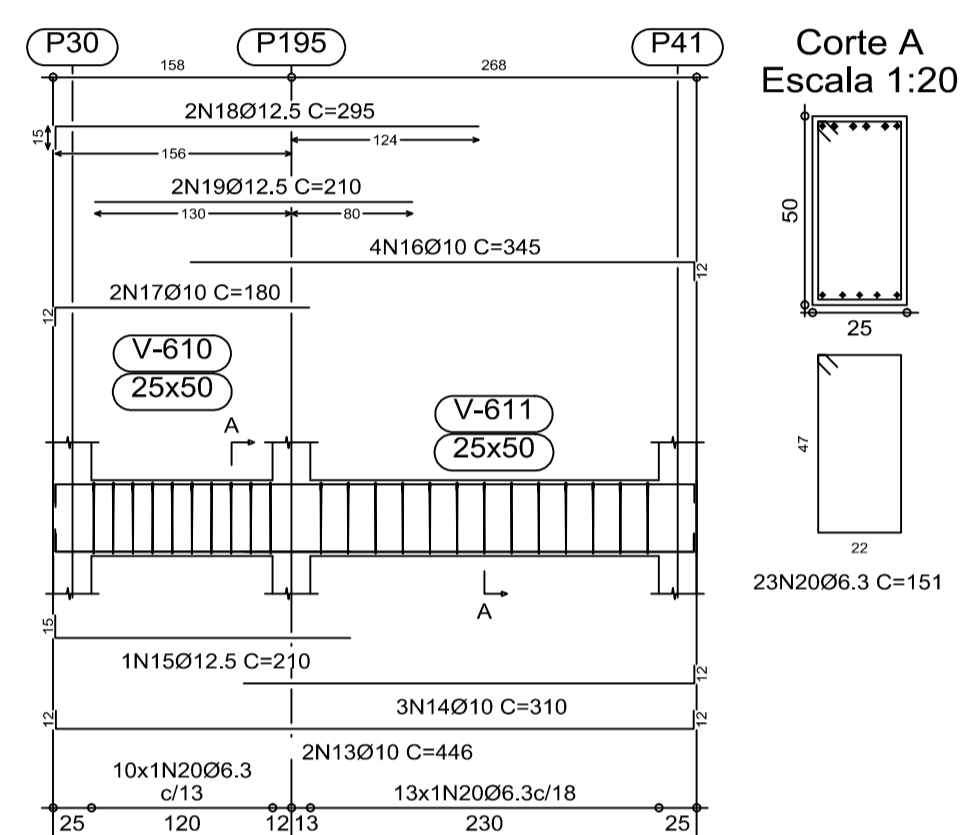


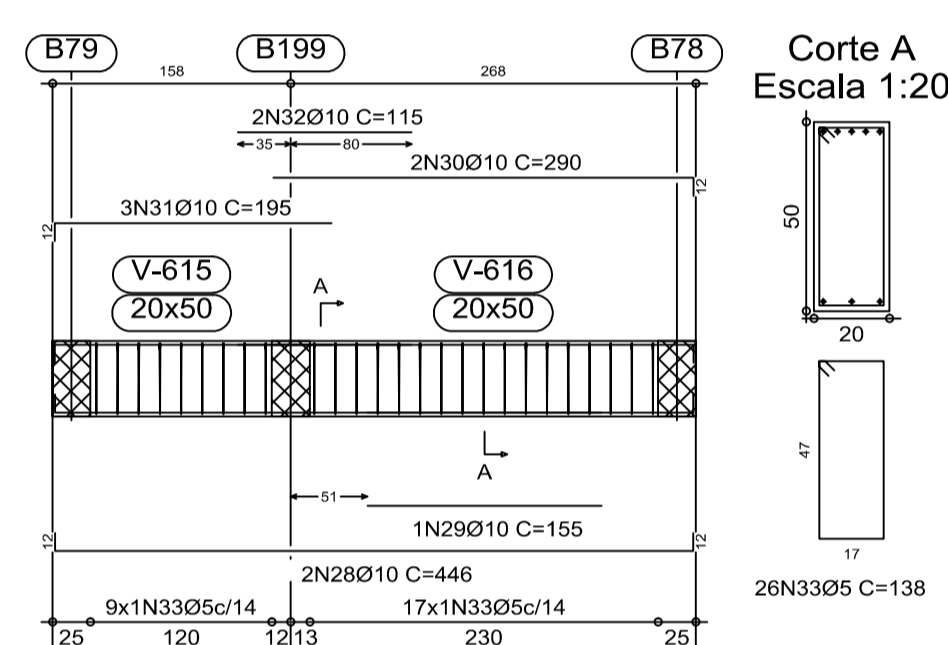
V B603  
Escala 1:50



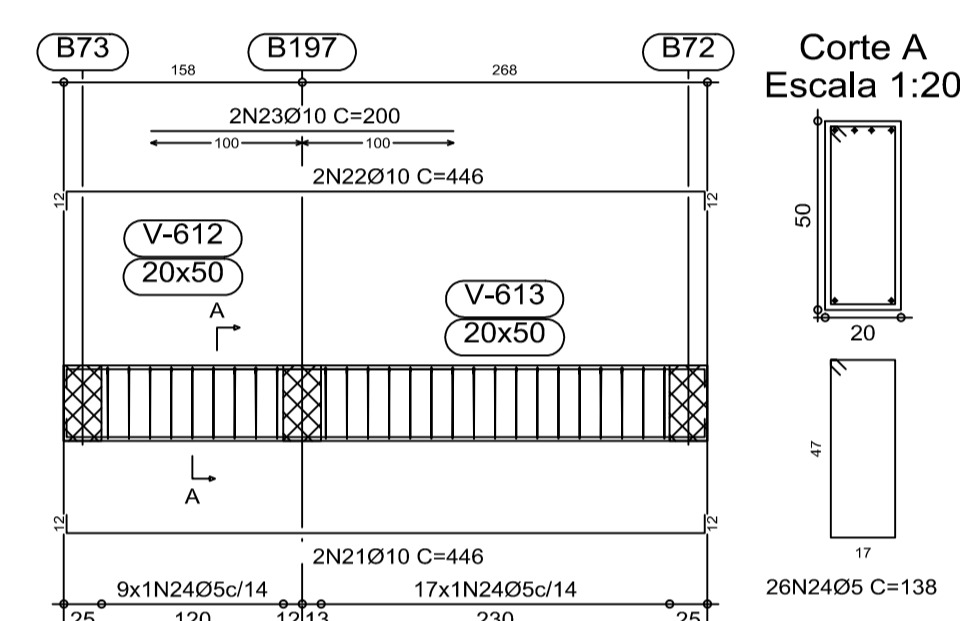
V B604  
Escala 1:50



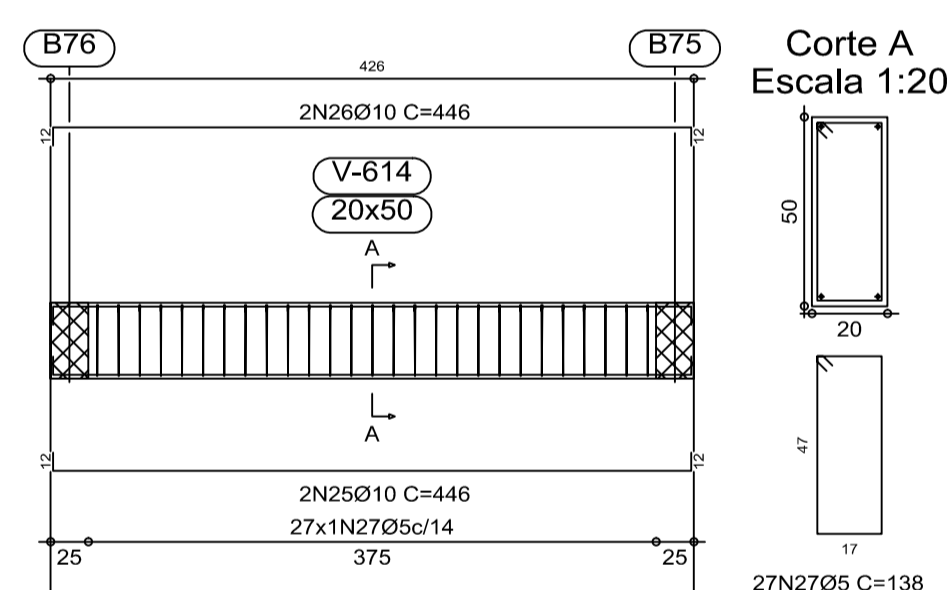
V B607  
Escala 1:50



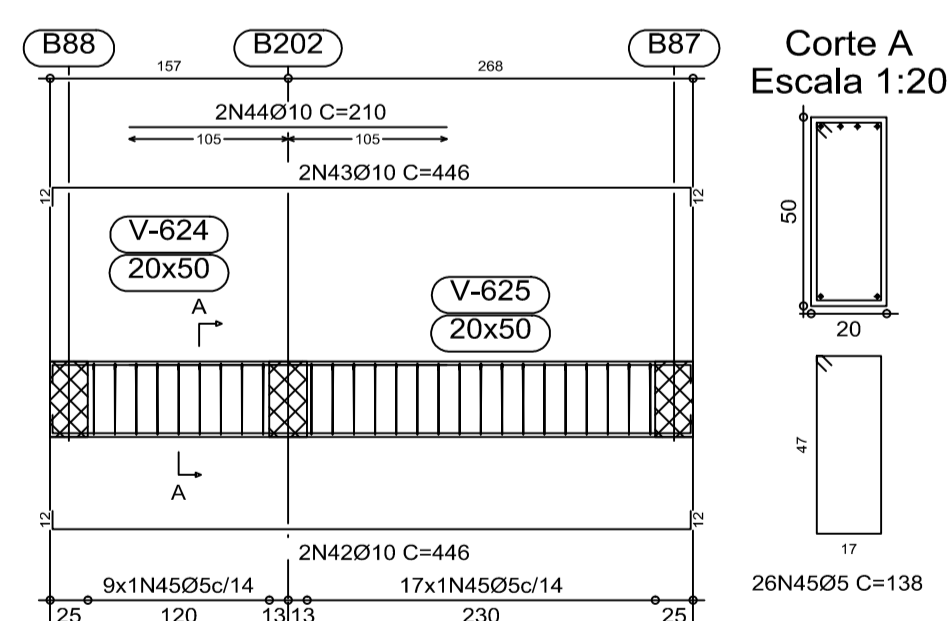
V B605  
Escala 1:50



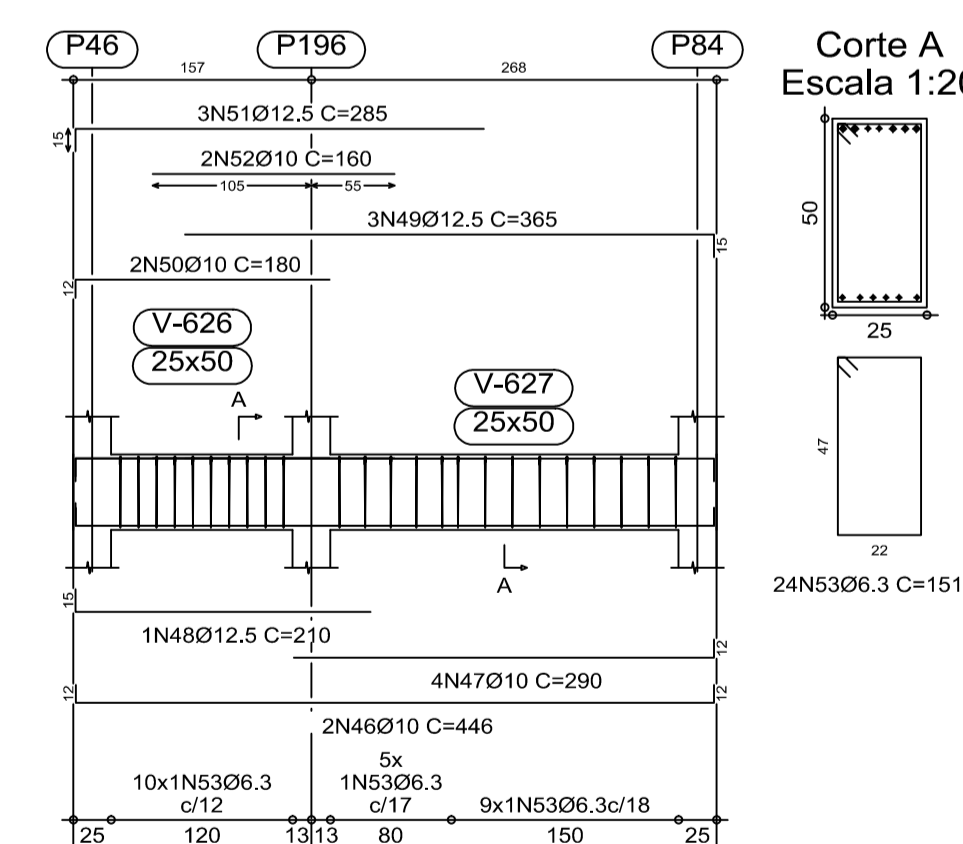
V B606  
Escala 1:50



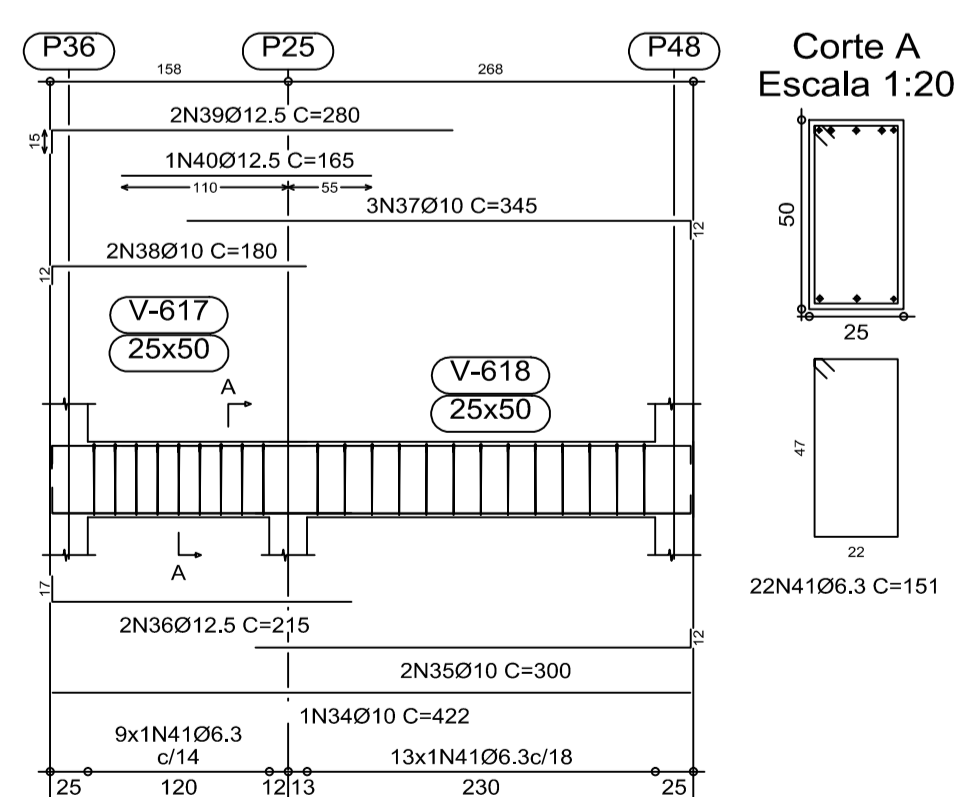
V B612  
Escala 1:50



V B613  
Escala 1:50



V B608  
Escala 1:50

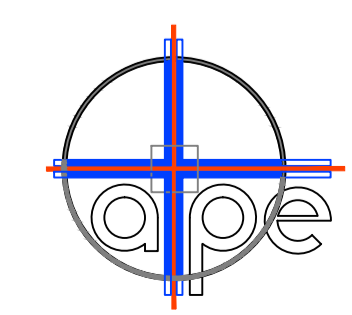


Elemento	Pos.	Diam.	Q.	DoB. (cm)	Reta (cm)	DoB. (cm)	Comp. (cm)	Total (cm)	CA-50-A (kg)	CA-60-B (kg)	
V B603	1	Ø12.5	2	590	15	605	1210	11.9			
	2	Ø12.5	2	585	600	1200	11.8				
	3	Ø10	2	500	500	1000	6.3				
	4	Ø10	2	335	335	670	4.2				
	5	Ø10	1	285	285	570	1.8				
	6	Ø10	2	1052	1080	2160	13.6				
	7	Ø10	2	577	605	1210	7.6				
	8	Ø10	4	275	275	1100	6.9				
	9	Ø12.5	2	220	220	440	4.3				
	10	Ø10	2	138	150	300	1.9				
	11	Ø10	2	145	290	580	1.8				
	12	Ø6.3	85	133	151	12835	31.7				
Total+10%:									114.2		
V B604	13	Ø10	2	422	12	446	892	5.6			
	14	Ø10	3	298	12	310	930	5.8			
	15	Ø12.5	1	195	210	210	2.1				
	16	Ø10	4	333	12	345	1380	8.7			
	17	Ø10	2	168	180	360	2.3				
	18	Ø12.5	2	15	280	295	5.8				
	19	Ø12.5	2	210	210	420	4.1				
	20	Ø6.3	23	151	151	3473	8.6				
	Total+10%:									47.3	
	V B605	21	Ø10	2	422	12	446	892	5.6		
22		Ø10	2	422	12	446	892	5.6			
23		Ø10	2	200	200	400	2.5			5.6	
24		Ø5	26	138	138	3588	11.1				
Total+10%:									15.1	6.2	
V B606	25	Ø10	2	422	12	446	892	5.6			
	26	Ø10	2	422	12	446	892	5.6			
	27	Ø5	27	138	138	3726	11.1			5.8	
Total+10%:									12.3	6.4	
V B607	28	Ø10	2	422	12	446	892	5.6			
	29	Ø10	1	155	155	155	1.0				
	30	Ø10	2	278	12	290	580	3.6			
	31	Ø10	3	183	195	585	3.7				
	32	Ø10	2	115	115	230	1.4				
	33	Ø5	26	138	138	3588	11.1			5.6	
	Total+10%:									16.8	6.2
	V B608	34	Ø10	1	422	12	446	892	2.7		
		35	Ø10	2	288	12	300	600	3.8		
		36	Ø12.5	2	17	198	215	430	4.2		
37		Ø10	3	333	12	345	1035	6.5			
38		Ø10	2	168	180	360	2.3				
39		Ø12.5	2	15	265	280	5.6				
40	Ø12.5	1	165	165	165	1.6					
41	Ø6.3	22	151	151	3322	8.2					
Total+10%:									38.3		
V B612	42	Ø10	2	422	12	446	892	5.6			
	43	Ø10	2	422	12	446	892	5.6			
	44	Ø10	2	210	210	420	2.6				
	45	Ø5	26	138	138	3588	11.1			5.6	
	Total+10%:									15.2	6.2
V B613	46	Ø10	2	422	12	446	892	5.6			
	47	Ø10	4	278	12	290	1160	7.3			
	48	Ø12.5	1	195	210	210	2.1				
	49	Ø12.5	3	350	15	365	1095	10.7			
	50	Ø10	2	168	180	360	2.3				
	51	Ø12.5	3	15	270	285	8.4				
	52	Ø10	2	160	160	320	2.0				
	53	Ø6.3	24	151	151	3624	9.0				
	Total+10%:									52.1	
										Ø5:	0.0
									Ø6.3:	63.3	0.0
									Ø10:	168.2	0.0
									Ø12.5:	79.8	0.0
									Total:	311.3	25.0

BASE DO RESERVATÓRIO  
Desenho de vigas  
Concreto: C20, em geral  
Aço: CA-50-A e CA-60-B  
Escala vigas: 1:50  
Escala seções: 1:20

REVISÕES		AUTOR	DATA
NR.	-	-	-
-	-	-	-
-	-	-	-
-	-	-	-
-	-	-	-
-	-	-	-

PARA APROVAÇÃO	ASS.	DATA:	ORDEN DE SERVIÇO:
LIBERADO P/ FABRICAÇÃO	ASS. ENG. REINALDO	DATA: 16/08/2010	01618
CONNECT DESIGN		TODOS OS DIREITOS RESERVADOS	
PROIBIDA A REPRODUÇÃO SEM AUTORIZAÇÃO PREVIA			
Proj:	ENG. REINALDO	Data:	16/08/2010
Prog:	CONNECT	Data:	16/08/2010
Dimensões:	CM	Arquivo:	STR-01618-052-REV00



ASSESSORIA TÉCNICA DE PLANEJAMENTO  
E ENGENHARIA  
**HOSPITAL DAS CLÍNICAS**  
UNESP - Campus de Botucatu - Distrito de Rubião Junior, S/N  
BOTUCATU.SP - CEP 18.618-000  
FONE (014) 3811-6050 - E-MAIL: atpe@fmb.unesp.br

<b>Hospital das Clínicas</b> Distrito de Rubião Junior, s/n   CEP 13518-070   Botucatu   São Paulo Tel. (14) 3811-6215   3811-6218   3811-6050   www.hcfmb.unesp.br	
OBRA AMPLIAÇÃO DO AMBULATÓRIO MÉDICO DE ESPECIALIDADES	ESTRUTURAL
LOCAL HOSPITAL DAS CLÍNICAS - BOTUCATU	REVISÃO 00
FRANCHA ARMAÇÃO DA BASE DO RESERVATÓRIO-SETOR B- COTA 104.50	ESCALAS 1:50
<b>52/56</b>	