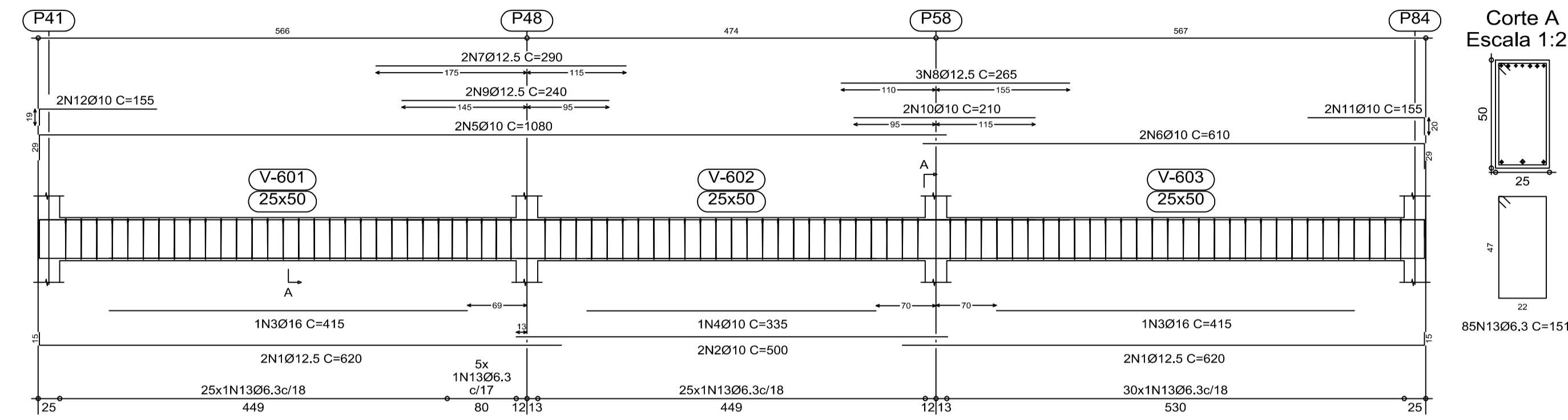
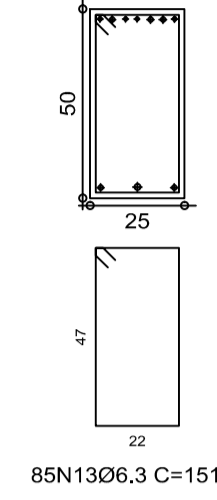


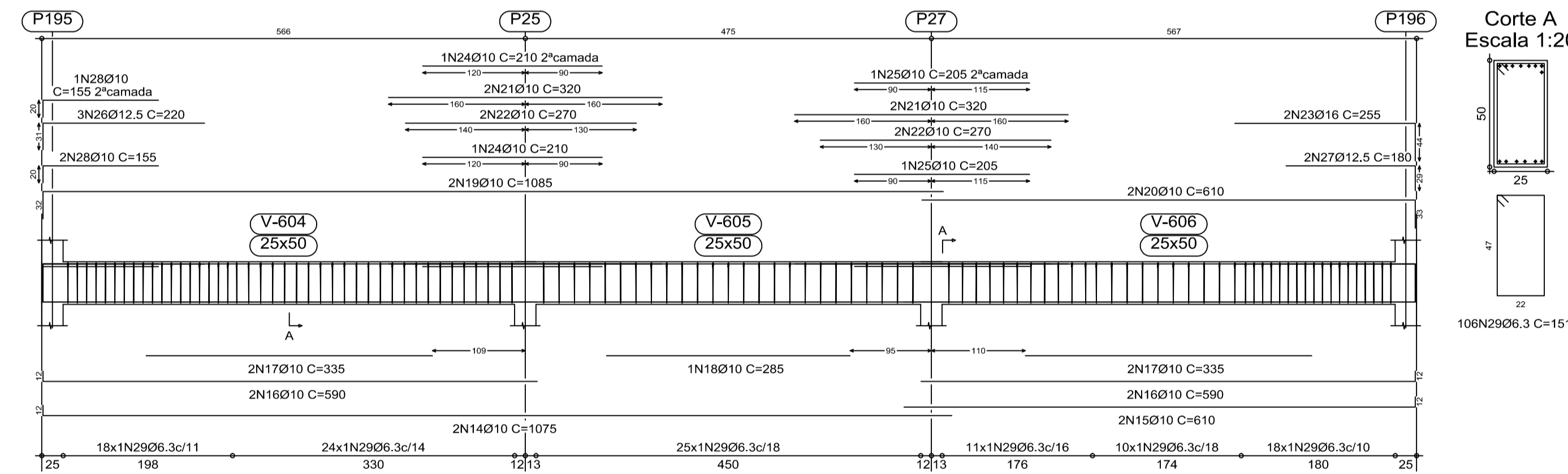
V B601
Escala 1:50



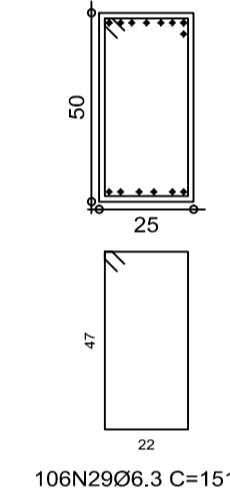
Corte A
Escala 1:20



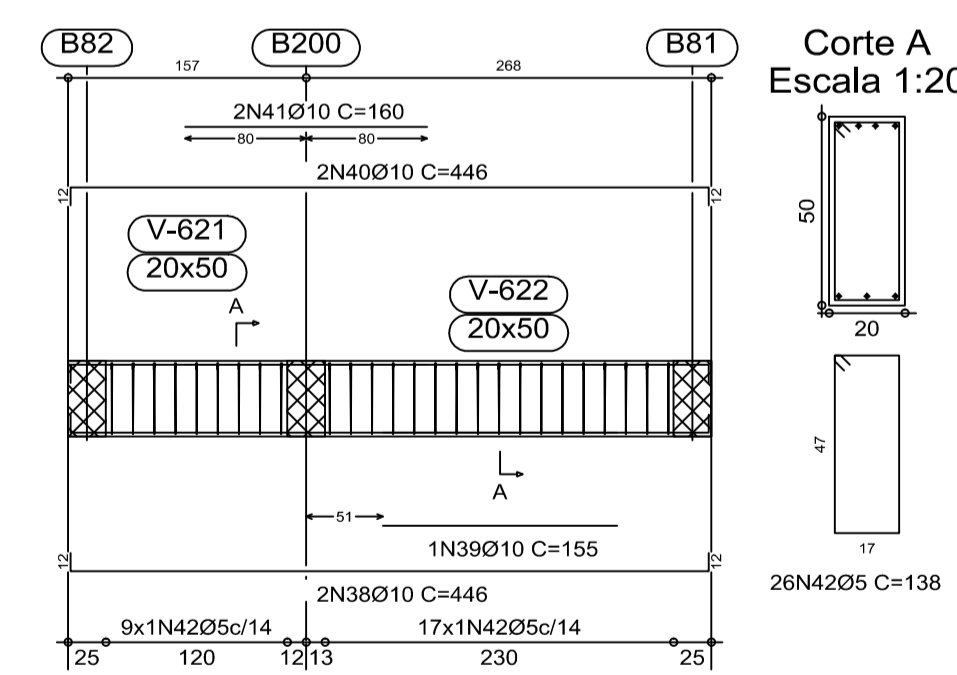
V B602
Escala 1:50



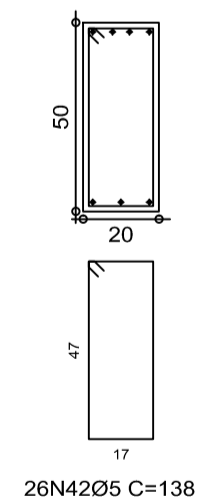
Corte A
Escala 1:20



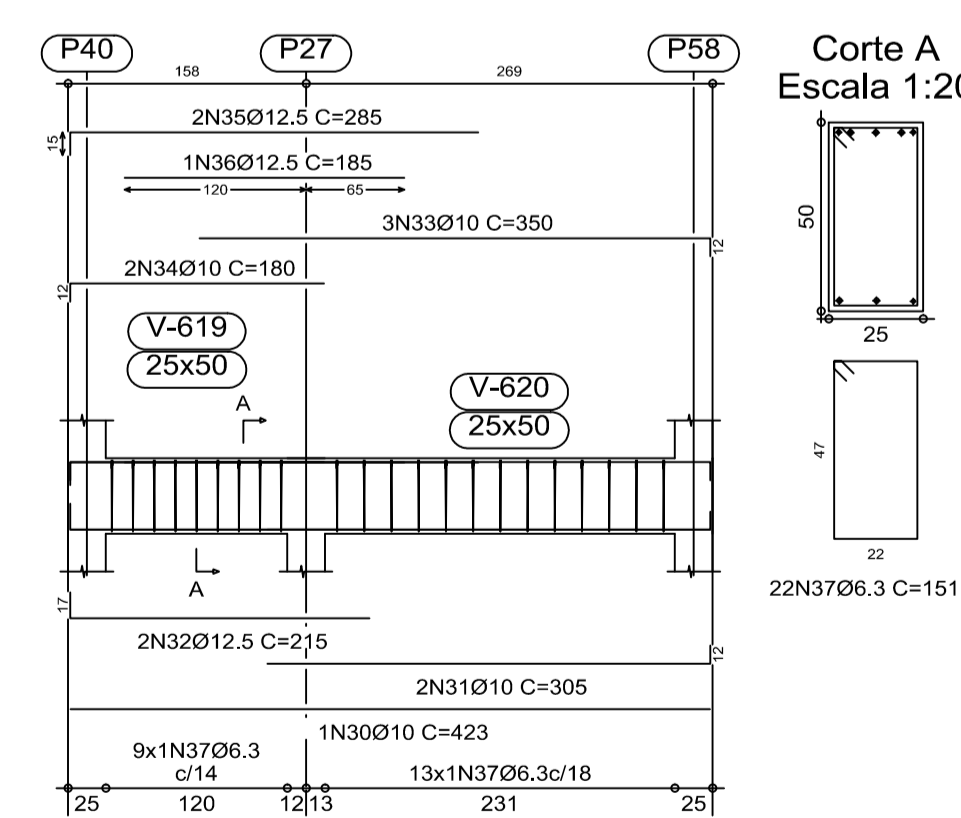
V B610
Escala 1:50



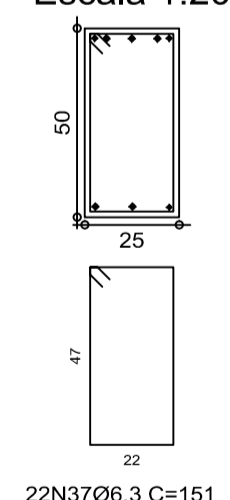
Corte A
Escala 1:20



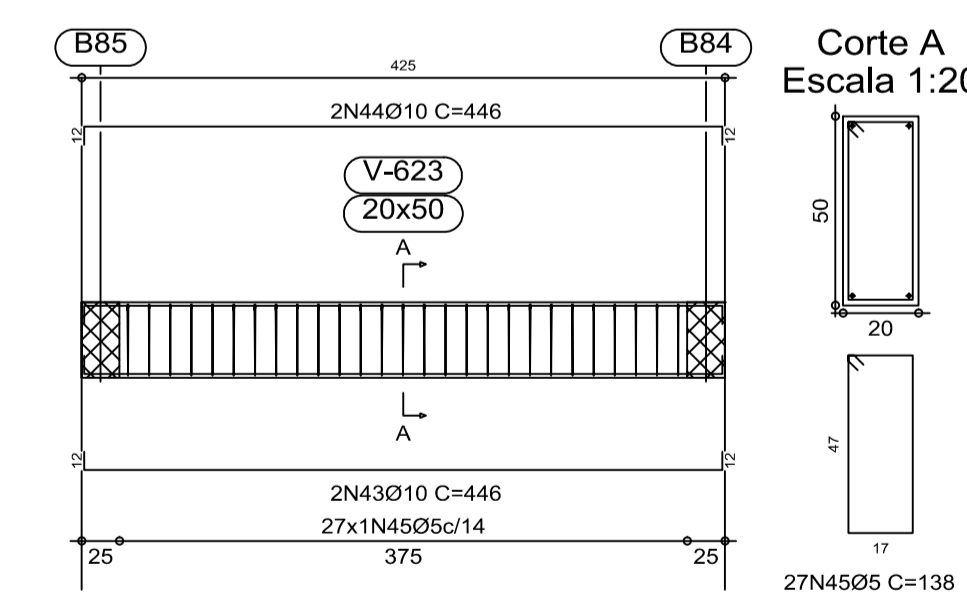
V B609
Escala 1:50



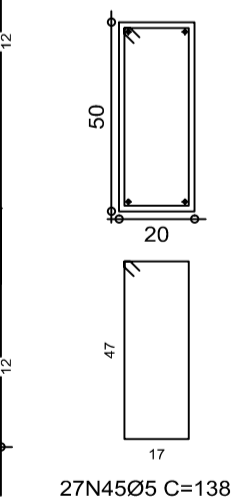
Corte A
Escala 1:20



V B611
Escala 1:50



Corte A
Escala 1:20



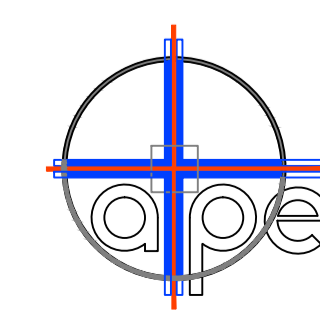
BASE DO RESERVATÓRIO
Desenho de vigas
Concreto: C20, em geral
Aço: CA-50-A e CA-60-B
Escala vigas: 1:50
Escala seções: 1:20

Elemento	Pos.	Diam.	Q.	Doç.	Reta	Doç.	Comp.	Total	CA-50-A	CA-60-B	
		(cm)		(cm)	(cm)	(cm)	(cm)	(cm)	(kg)	(kg)	
V B601	1	Ø12.5	4	605	15	620	2480	24.3			
	2	Ø10	2	500	1000	6.3					
	3	Ø16	2	415	830	13.0					
	4	Ø10	1	335	335	2.1					
	5	Ø10	2	1051	1080	2160	13.6				
	6	Ø10	2	581	29	610	1220	7.7			
	7	Ø12.5	2	290	290	580	5.7				
	8	Ø12.5	3	265	265	795	7.8				
	9	Ø12.5	2	240	240	480	4.7				
	10	Ø10	2	210	210	420	2.6				
	11	Ø10	2	135	20	155	310	1.9			
	12	Ø10	2	136	151	155	310	1.9			
	13	Ø6.3	85			151	12835	31.7			
Total+10%:									135.6		
V B602	14	Ø10	2	12	1063	1075	2150	13.5			
	15	Ø10	2	598	12	610	1220	7.7			
	16	Ø10	4	578	12	590	2360	14.8			
	17	Ø10	4	335	12	335	1340	8.4			
	18	Ø10	1	285	285	285	1.8				
	19	Ø10	2	1053	1085	2170	13.6				
	20	Ø10	2	577	33	610	1220	7.7			
	21	Ø10	4	320	33	320	1280	8.0			
	22	Ø10	4	270	270	1080	6.8				
	23	Ø16	2	211	44	255	510	8.0			
	24	Ø10	2	210	210	420	2.6				
	25	Ø10	2	205	205	410	2.6				
	26	Ø12.5	3	189	220	660	6.5				
	27	Ø12.5	2	151	29	180	360	3.5			
	28	Ø10	3	20	151	465	2.9				
	29	Ø6.3	106			151	16006	39.6			
	Total+10%:									162.8	
V B609	30	Ø10	1	423	12	423	423	2.7			
	31	Ø10	2	293	12	305	610	3.8			
	32	Ø12.5	2	17	198	215	430	4.2			
	33	Ø10	3	338	12	350	1050	6.6			
	34	Ø10	2	12	168	180	360	2.3			
	35	Ø12.5	2	15	270	285	570	5.8			
	36	Ø12.5	1	185	185	185	1.8				
	37	Ø6.3	22			151	3322	8.2			
Total+10%:									38.7		
V B610	38	Ø10	2	12	422	12	446	892	5.6		
	39	Ø10	1	155	155	155	1.0				
	40	Ø10	2	12	422	12	446	892	5.6		
	41	Ø10	2	160	160	320	2.0				
	42	Ø5	26			138	3588	8.2			
Total+10%:									15.6		
V B611	43	Ø10	2	12	422	12	446	892	5.6		
	44	Ø10	2	12	422	12	446	892	5.6		
	45	Ø5	27			138	3726	8.2			
Total+10%:									12.3		
									Ø5:	0.0	12.6
									Ø6.3:	87.4	0.0
									Ø10:	163.9	0.0
									Ø12.5:	70.6	0.0
									Ø16:	23.1	0.0
									Total:	365.0	12.6

Resumo Aço	Comp. total	Peso+10%	Total
BASE DO RESERVATÓRIO	(m)	(kg)	
CA-50-A	Ø6.3	554.2	151
	Ø10	509.8	352
	Ø12.5	139.3	150
	Ø16	13.4	23
CA-60-B	Ø5	218.0	38
Total			714

REVISÕES		
NR.	AUTOR	DATA
-	-	-
-	-	-
-	-	-
-	-	-
-	-	-
-	-	-

PARA APROVAÇÃO	ASS.	DATA:	ORDEM DE SERVIÇO:
X LIBERADO P/ FABRICAÇÃO	ASS. ENG. REINALDO	DATA: 16/08/2010	01618
CONNECT DESIGN		TODOS OS DIREITOS RESERVADOS	
Rua João Passos, 1890 - CEP 18602-140 Botucatu - SP		PROIBIDA A REPRODUÇÃO SEM AUTORIZAÇÃO PREVIA	
Fone/Fax + 55 14 3815-1873 / 3813-4563		Data: 16/08/2010	
connect@connectdesign.com.br		Data: 16/08/2010	
www.connectdesign.com.br		Arquivo: STR-01618-051-REV00	
CREA: 1161900		Dimensões: CM	



ASSESSORIA TÉCNICA DE PLANEJAMENTO
E ENGENHARIA
HOSPITAL DAS CLÍNICAS
UNESP - Campus de Botucatu - Distrito de Rubião Junior, S/N
BOTUCATU, SP - CEP 18.618-000
FONE (014) 3811-6050 - E-MAIL: atpe@fmb.unesp.br

Hospital das Clínicas Distrito de Rubião Junior, s/n CEP 13518-070 Botucatu São Paulo Tel. (14) 3811-6215 3811-6218 3811-6050 www.hclmb.unesp.br		ESTRUTURAL
OBRA AMPLIAÇÃO DO AMBULATÓRIO MÉDICO DE ESPECIALIDADES		FOLHA
LOCAL HOSPITAL DAS CLÍNICAS - BOTUCATU	REVISÃO 00	51/56
FRANCHA ARMAÇÃO DA BASE DO RESERVATÓRIO-SETOR B- COTA 105.00	ESCALAS 1:50	