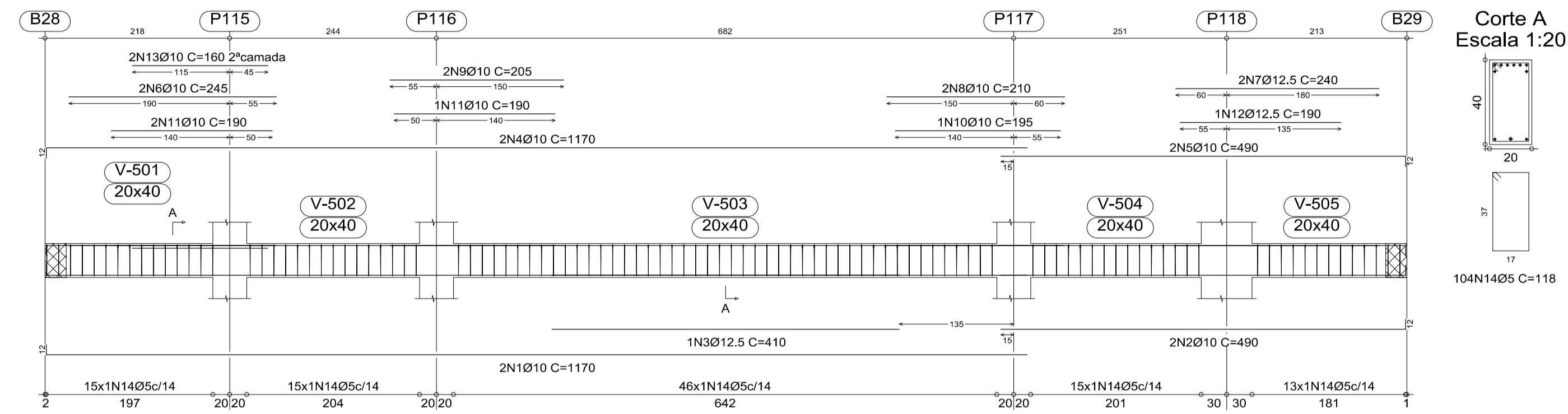
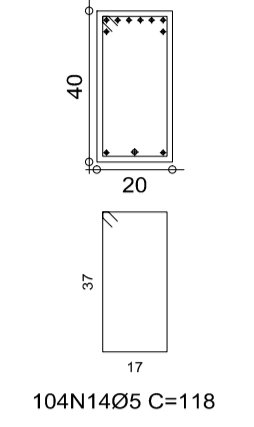


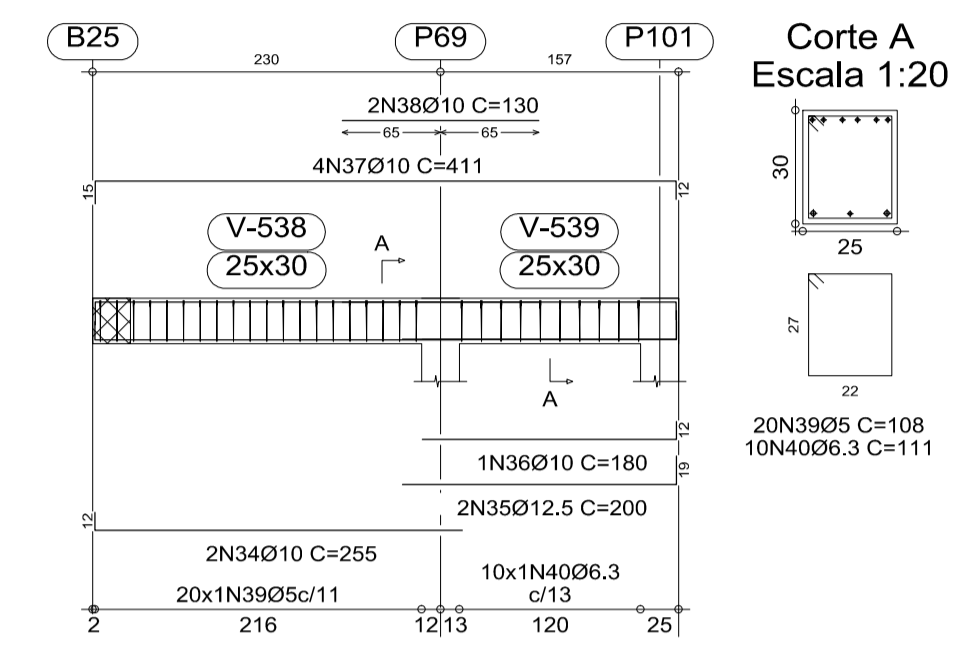
V B501
Escala 1:50



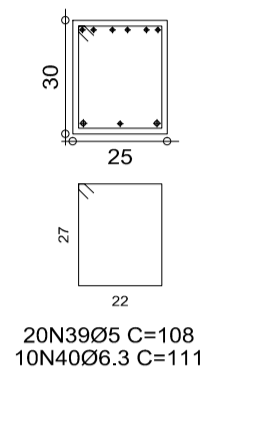
Corte A
Escala 1:20



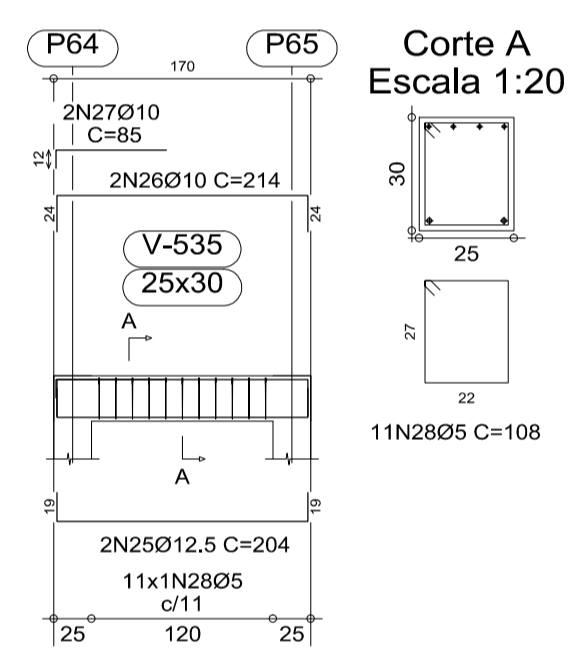
V B517
Escala 1:50



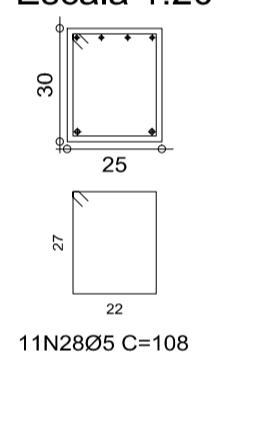
Corte A
Escala 1:20



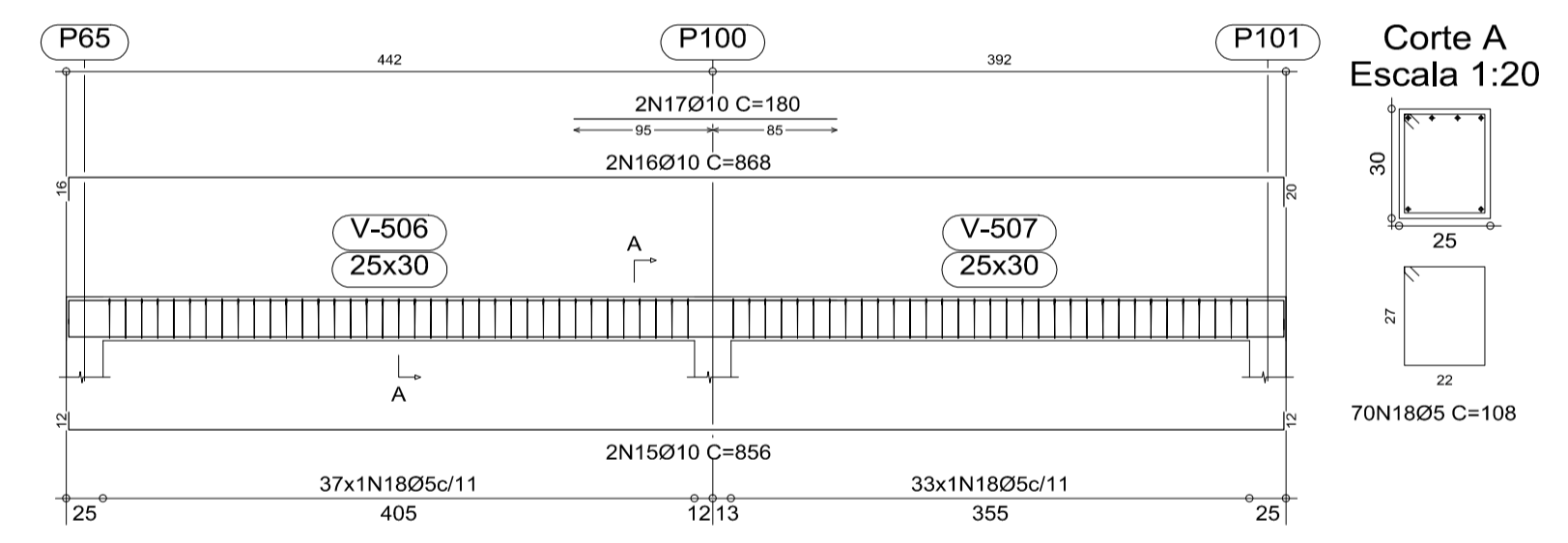
V B515
Escala 1:50



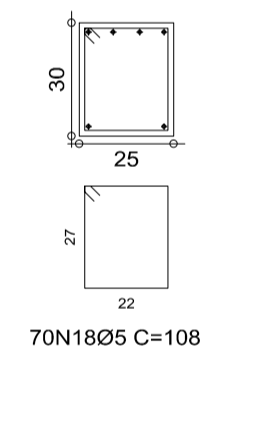
Corte A
Escala 1:20



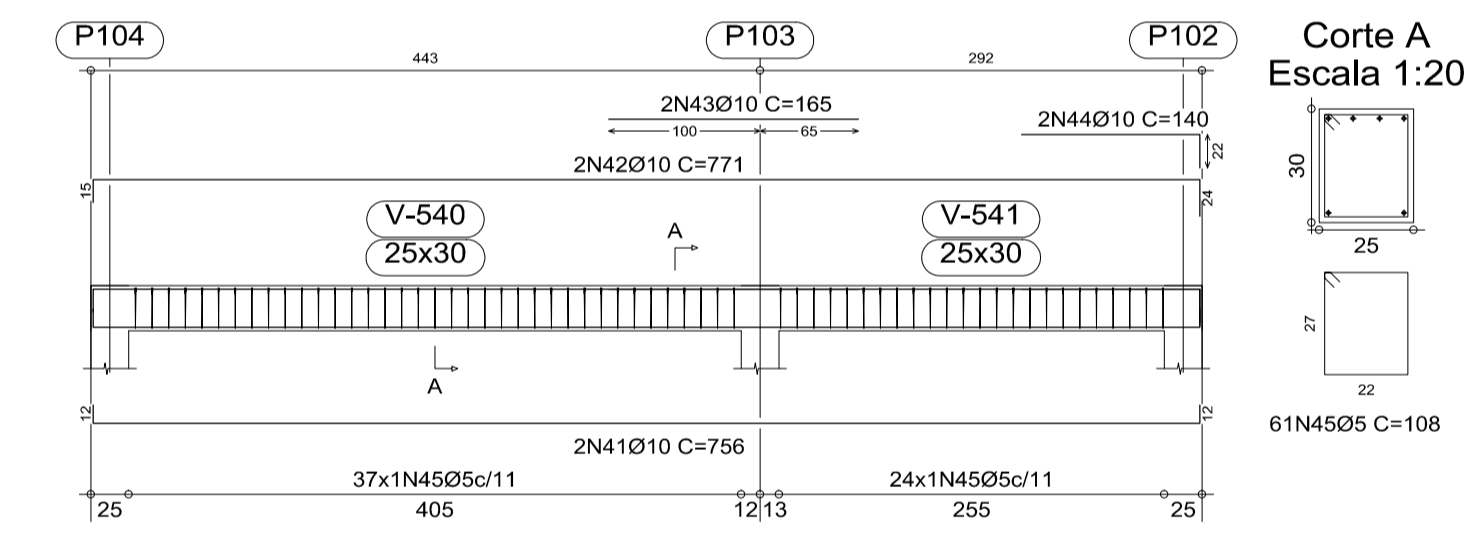
V B502
Escala 1:50



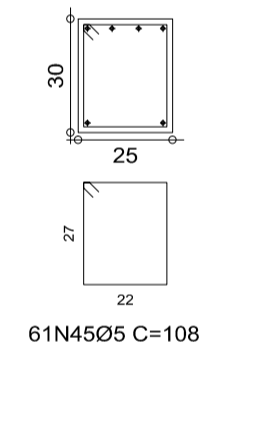
Corte A
Escala 1:20



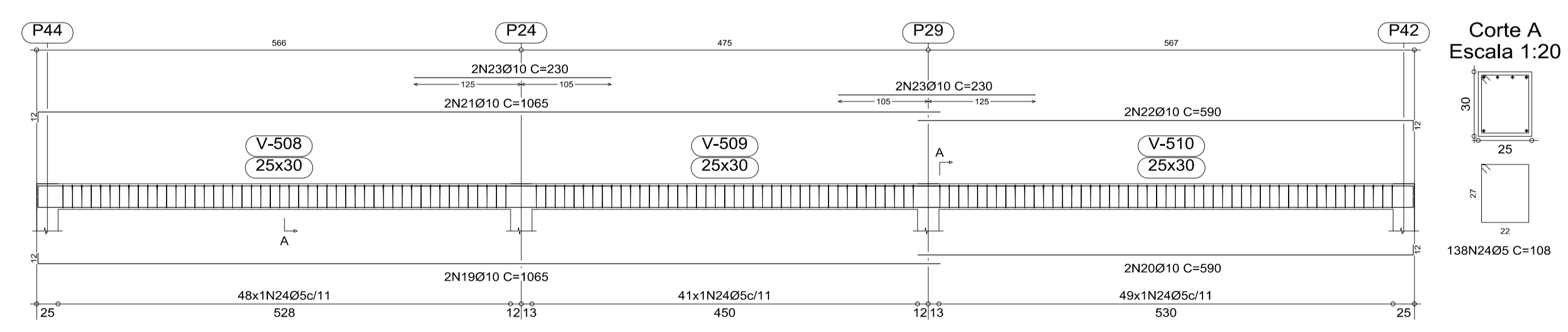
V B518
Escala 1:50



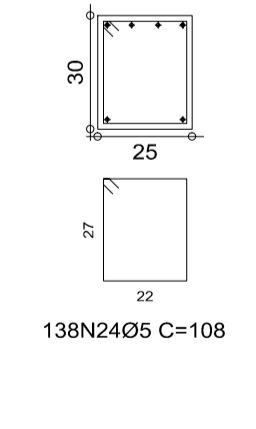
Corte A
Escala 1:20



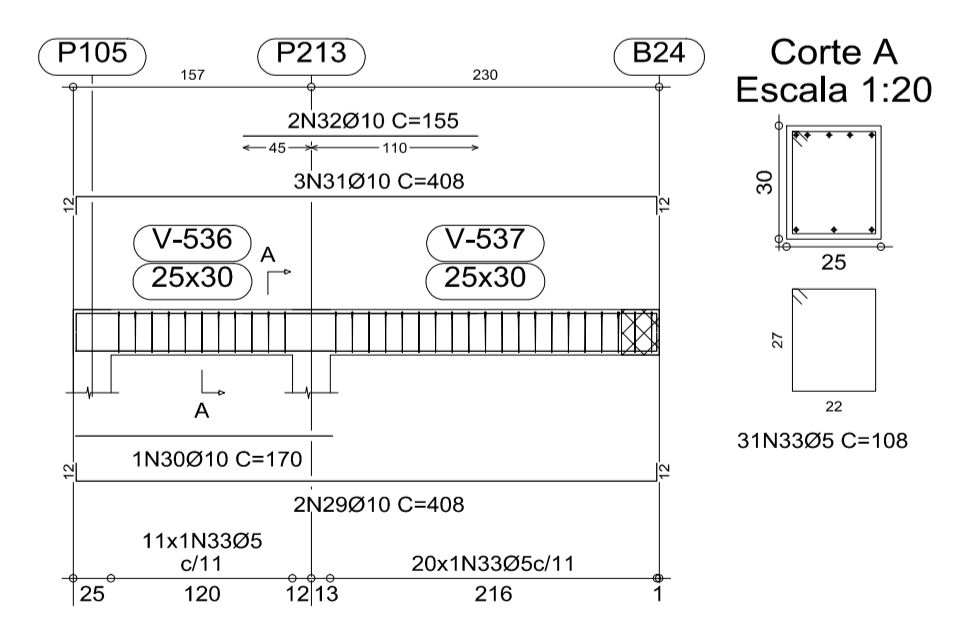
V B503
Escala 1:50



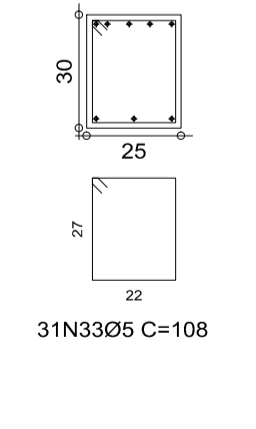
Corte A
Escala 1:20



V B516
Escala 1:50



Corte A
Escala 1:20



Elemento	Pos.	Diam.	Q.	DoB. (cm)	Reita (cm)	DoB. (cm)	Comp. (cm)	Total (cm)	CA-50-A (kg)	CA-60-B (kg)	
V B501	1	Ø10	2	12	1158		1170	2340	14.7		
	2	Ø10	2	12	478	12	490	980	6.2		
	3	Ø12.5	1		410		410	410	4.0		
	4	Ø10	2	12	1158		1170	2340	14.7		
	5	Ø10	2		478	12	490	980	6.2		
	6	Ø10	2		245		245	490	3.1		
	7	Ø12.5	2		240		240	480	4.7		
	8	Ø10	2		210		210	420	2.6		
	9	Ø10	2		205		205	410	2.6		
	10	Ø10	1		195		195	195	1.2		
	11	Ø10	3		190		190	570	3.6		
	12	Ø12.5	1		190		190	190	1.9		
	13	Ø10	2		160		160	320	2.0		
	14	Ø5	104		118		118	12272		19.3	
Total+10%:									74.3	21.2	
V B502	15	Ø10	2	12	832	12	856	1712	10.8		
	16	Ø10	2	16	832	20	868	1736	10.9		
	17	Ø10	2		180		180	360	2.3		
18	Ø5	70		108		108	7560		11.9		
Total+10%:									26.4	13.1	
V B503	19	Ø10	2	12	1053		1065	2130	13.4		
	20	Ø10	2		578	12	590	1180	7.4		
	21	Ø10	2	12	1053		1065	2130	13.4		
	22	Ø10	2		578	12	590	1180	7.4		
	23	Ø10	4		230		230	920	5.8		
24	Ø5	138		108		108	14904		23.4		
Total+10%:									52.1	25.7	
V B515	25	Ø12.5	2	19	166	19	204	408	4.0		
	26	Ø10	2	24	166	24	214	428	2.7		
	27	Ø10	2	12	73		85	170	1.1		
	28	Ø5	11		108		108	1188		1.9	
Total+10%:									8.6	2.1	
V B516	29	Ø10	2	12	384	12	408	816	5.1		
	30	Ø10	1		170		170	170	1.1		
	31	Ø10	3	12	384	12	408	1224	7.7		
	32	Ø10	2		155		155	310	1.9		
	33	Ø5	31		108		108	3348		5.3	
Total+10%:									17.4	5.8	
V B517	34	Ø10	2	12	243		255	510	3.2		
	35	Ø12.5	2		181	19	200	400	3.9		
	36	Ø10	1		168	12	180	180	1.1		
	37	Ø10	4	15	384	12	411	1644	10.3		
	38	Ø10	2		130		130	260	1.6		
	39	Ø5	20		108		108	2160		3.4	
	40	Ø6.3	10		111		111	1110		2.7	
	Total+10%:									25.1	3.7
V B518	41	Ø10	2	12	732	12	756	1512	9.5		
	42	Ø10	2	15	732	24	771	1542	9.7		
	43	Ø10	2		165		165	330	2.1		
	44	Ø10	2		118	22	140	280	1.8		
	45	Ø5	61		108		108	6588		10.3	
Total+10%:									25.4	11.3	
									Ø5:	0.0	82.9
									Ø6.3:	3.0	0.0
									Ø10:	205.9	0.0
									Ø12.5:	20.4	0.0
									Total:	229.3	82.9

REVISÕES		
NR.	AUTOR	DATA
-	-	-
-	-	-
-	-	-
-	-	-
-	-	-
-	-	-

PARA APROVAÇÃO ASS: _____ DATA: _____ ORDEM DE SERVIÇO: 01618

X LIBERADO P/ FABRICAÇÃO ASS: ENG. REINALDO DATA: 16/08/2010

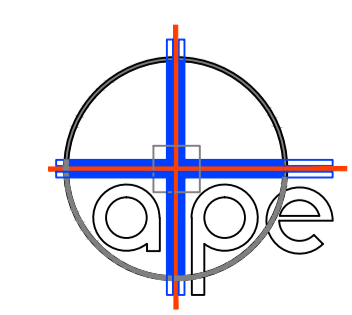
CONNECT DESIGN TODOS OS DIREITOS RESERVADOS
PROIBIDA A REPRODUÇÃO SEM AUTORIZAÇÃO PREVIA

Proj: ENG. REINALDO Data: 16/08/2010

Prog: CONNECT Data: 16/08/2010

Dimensões: CM Arquivo: STR-01618-049-REV00

Rua João Passos, 1880 - CEP 18602-140 Botucatu - SP
Fone/Fax + 55 14 3815-1873 / 3813-4563
connect@connectdesign.com.br
www.connectdesign.com.br
CREA: 1161900



ASSESSORIA TÉCNICA DE PLANEJAMENTO
E ENGENHARIA
HOSPITAL DAS CLÍNICAS
UNESP - Campus de Botucatu - Distrito de Rubião Junior, S/N
BOTUCATU, SP - CEP 18.618-000
FONE (014) 3811-6050 - E-MAIL: alpe@fmb.unesp.br

Hospital das Clínicas
Distrito de Rubião Junior, s/n | CEP 18618-070 | Botucatu | São Paulo
Tel. (14) 3811-6215 | 3811-6218 | 3811-6050 | www.hclm.unesp.br

OBRA: AMPLIAÇÃO DO AMBULATÓRIO MÉDICO DE ESPECIALIDADES

LOCAL: HOSPITAL DAS CLÍNICAS - BOTUCATU

FRANCHA: VIGAS DO APOIO DAS TESOURAS- COTA 104.50-SETOR B

REVISÃO: 00

ESCALAS: 1:50

ESTRUTURAL

FOLHA: 49/56

APOIO DA COBERTURA
Desenho de vigas
Aço: CA-50-A e CA-60-B
Escala vigas: 1:50
Escala seções: 1:20

Resumo Aço	Comp. total (m)	Peso+10% (kg)	Total
APOIO DA COBERTURA Vigas			
CA-50-A Ø6.3	11.1	3	
Ø10	840.8	581	
Ø12.5	29.8	32	616
CA-60-B Ø5	1350.7	233	233
Total			849