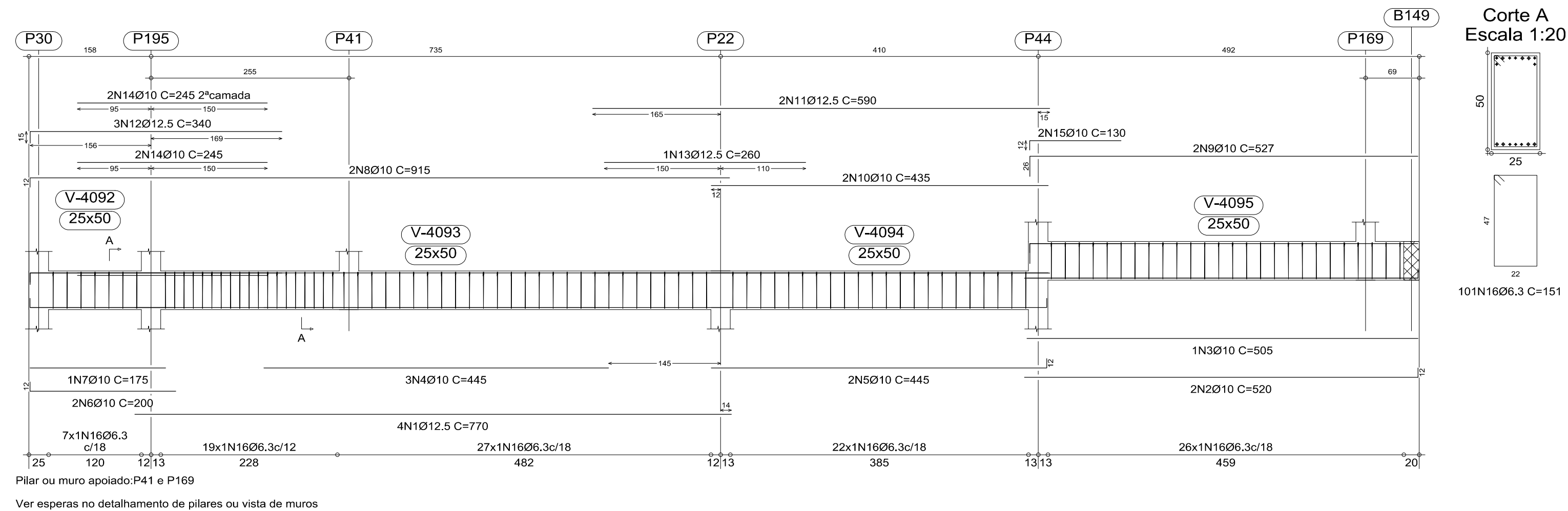
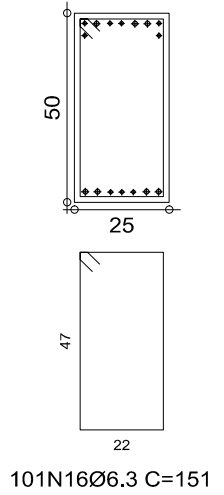


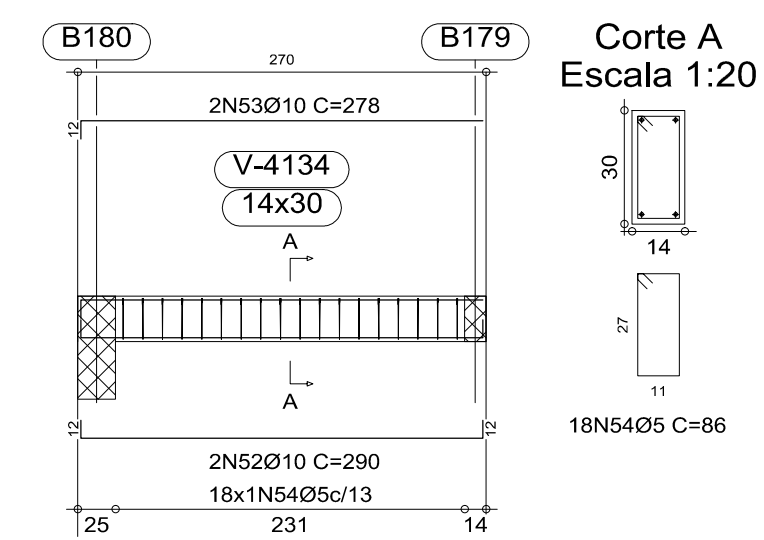
V B429
Escala 1:50



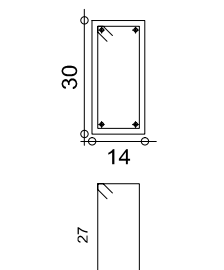
Corte A
Escala 1:20



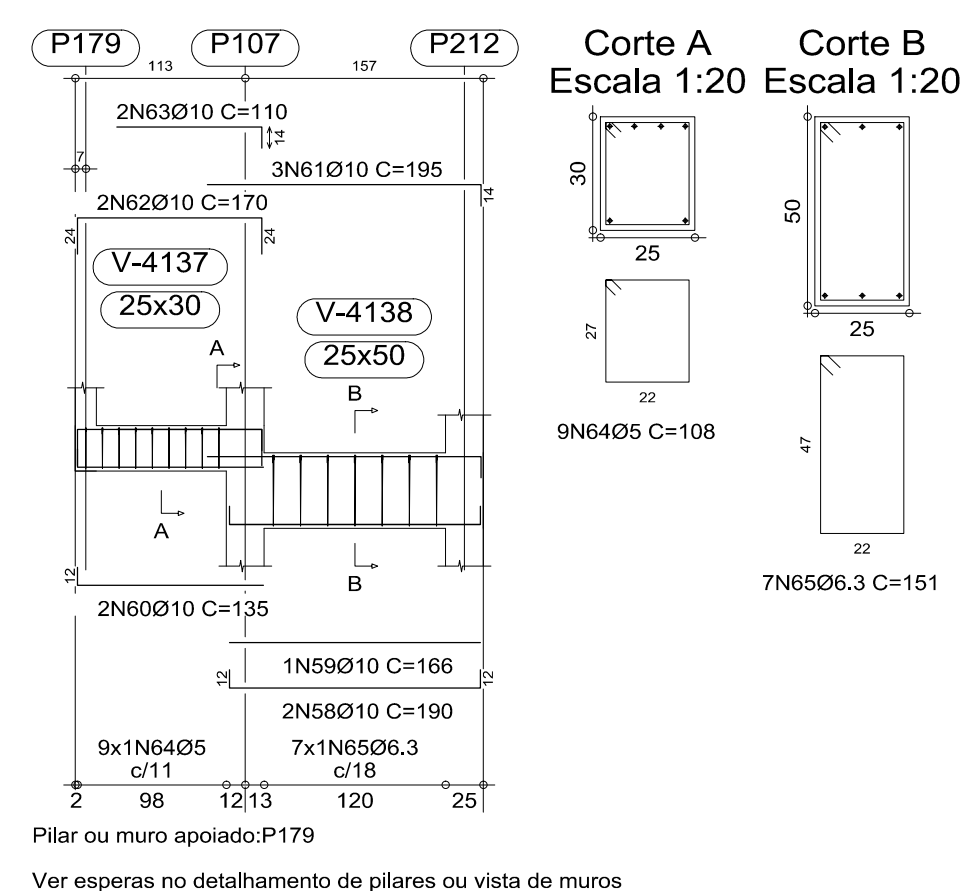
V B452
Escala 1:50



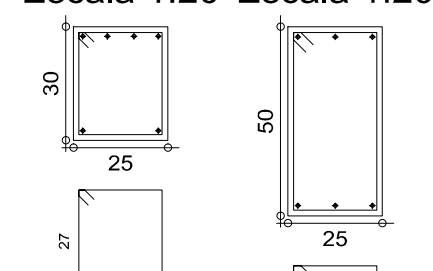
Corte A
Escala 1:20



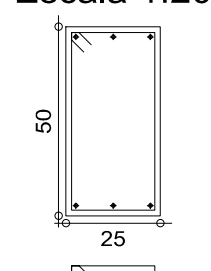
V B454
Escala 1:50



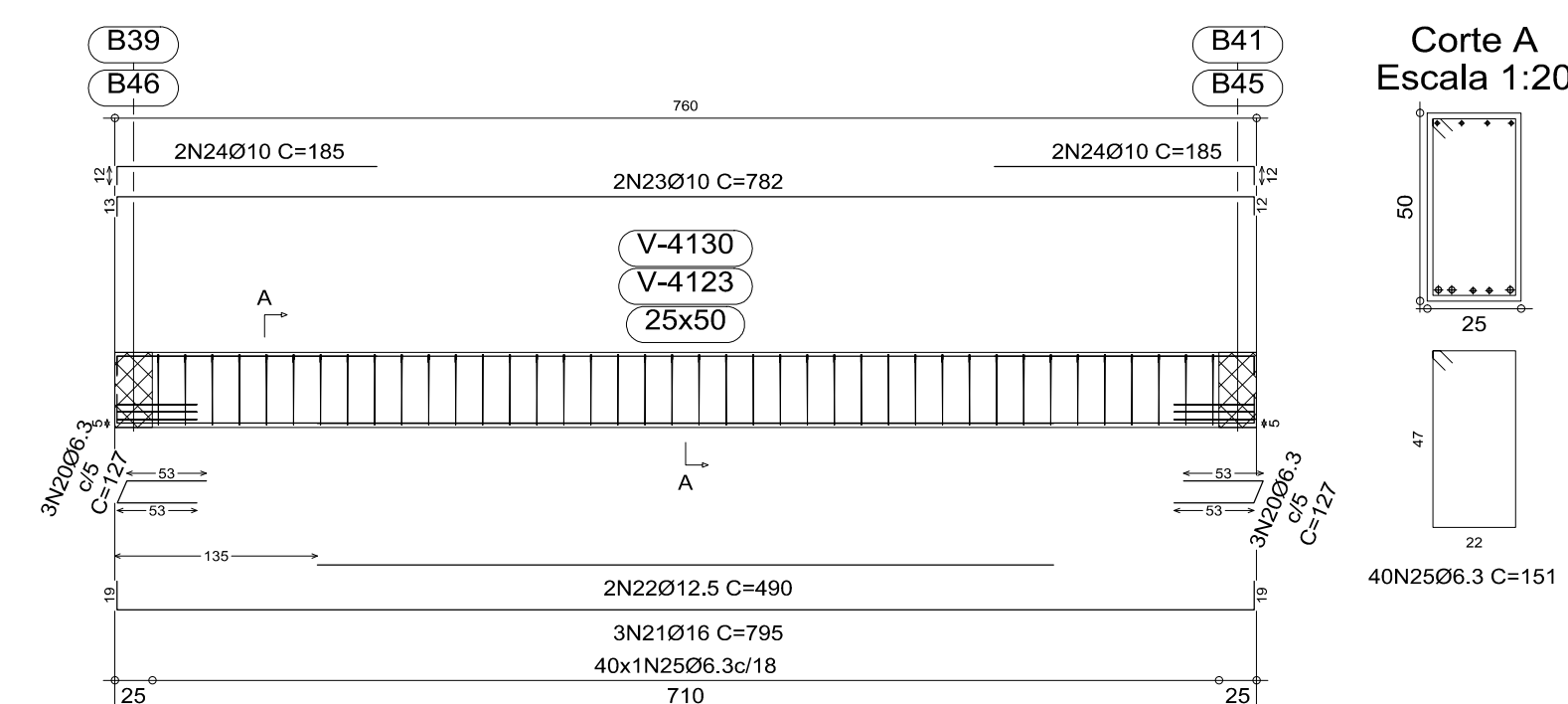
Corte A
Escala 1:20



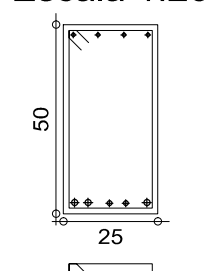
Corte B
Escala 1:20



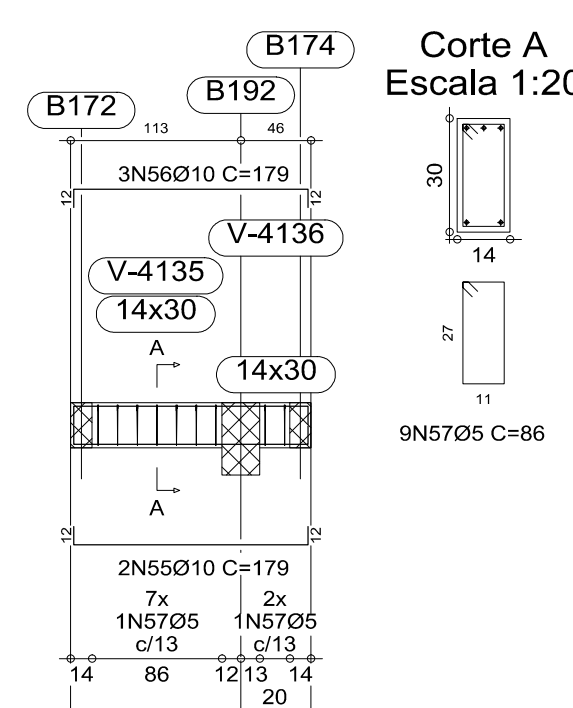
V B441
V B448
Escala 1:50



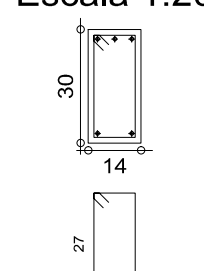
Corte A
Escala 1:20



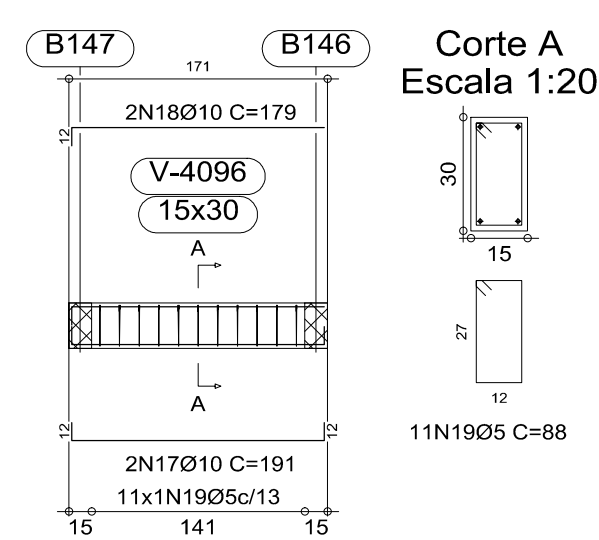
V B453
Escala 1:50



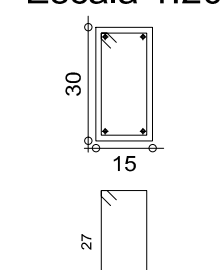
Corte A
Escala 1:20



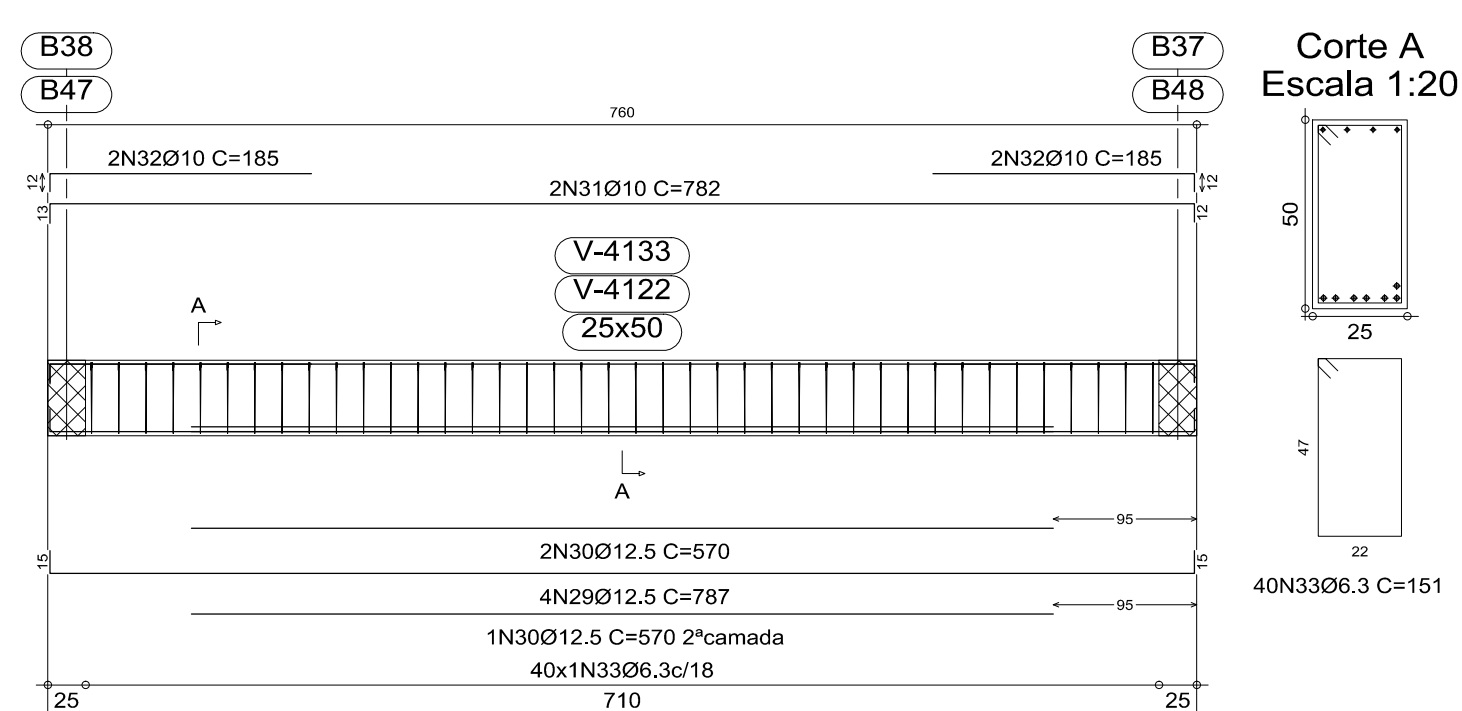
V B430
Escala 1:50



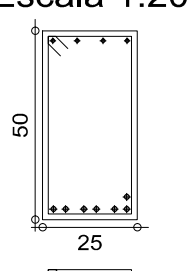
Corte A
Escala 1:20



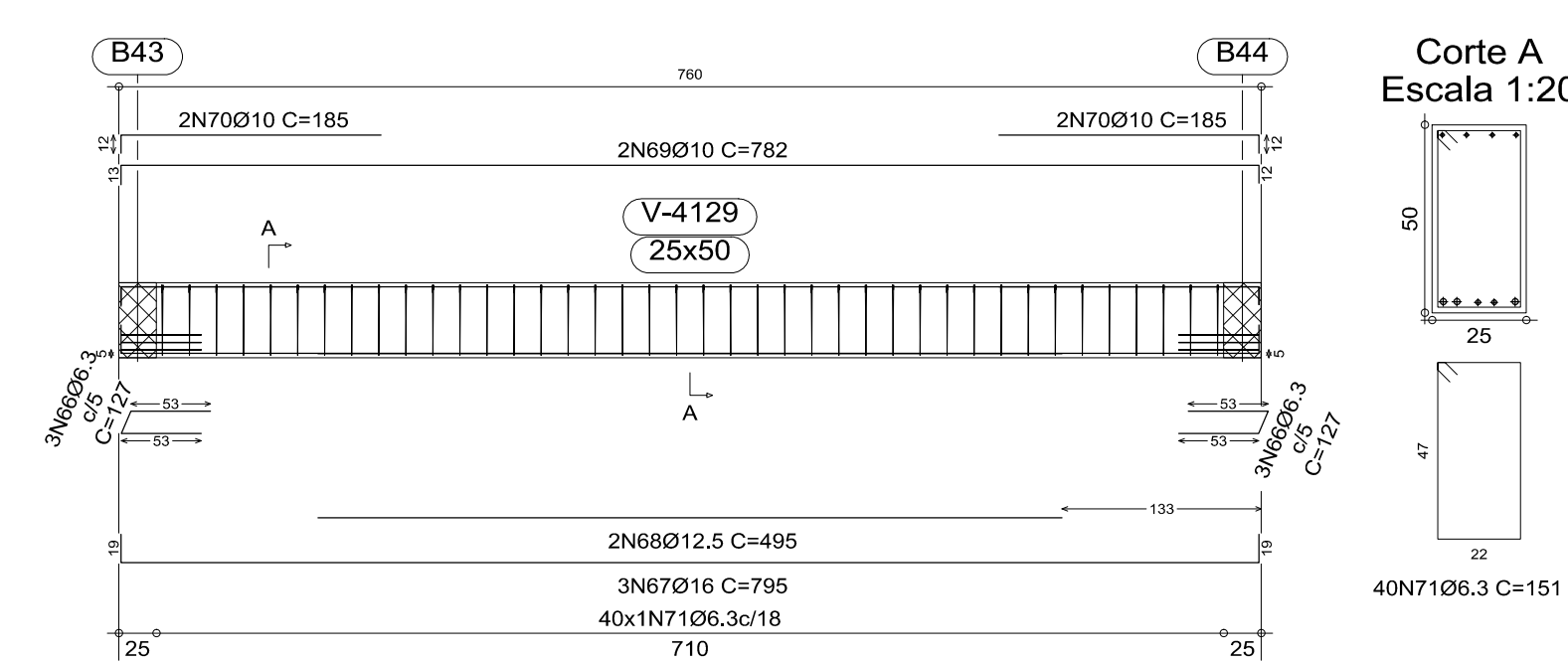
V B440
V B451
Escala 1:50



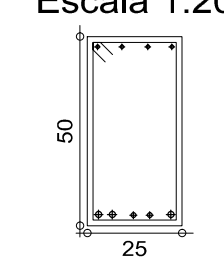
Corte A
Escala 1:20



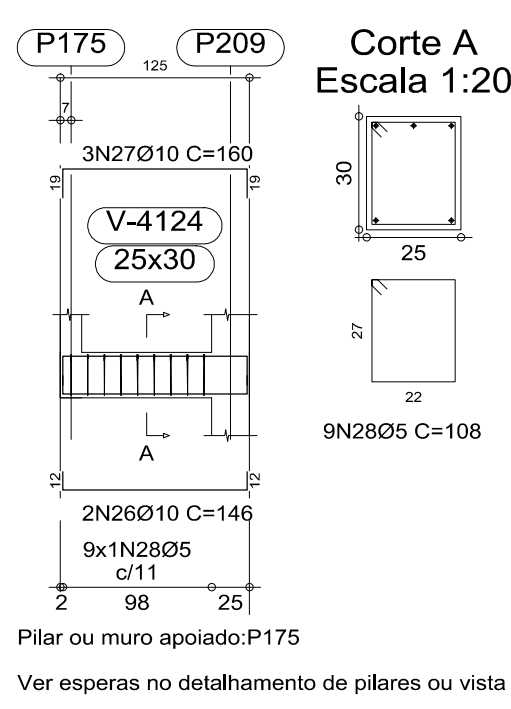
V B447
Escala 1:50



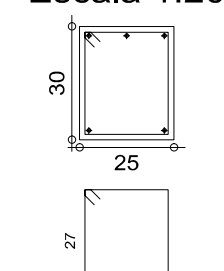
Corte A
Escala 1:20



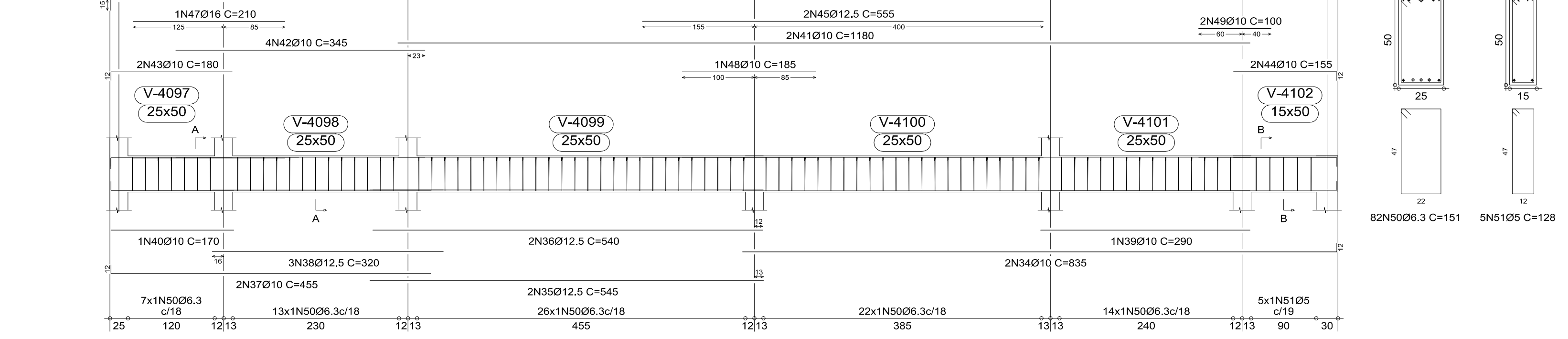
V B442
Escala 1:50



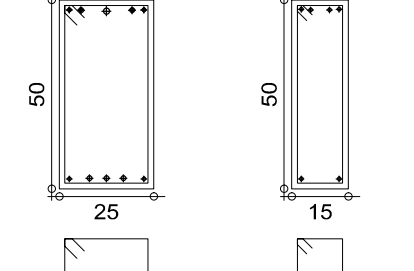
Corte A
Escala 1:20



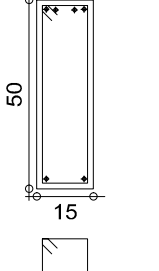
V B431
Escala 1:50



Corte A
Escala 1:20



Corte B
Escala 1:20



| Elemento | Pos. | Diam. | Q. | DoB. (cm) | Reita (cm) | DoB. (cm) | Comp. (cm) | Total (cm) | CA-50-A (kg) | CA-60-B (kg) |
|---------------|------------|-------|-----|-----------|------------|-----------|------------|------------|--------------|--------------|
| V B429 | 1 | Ø12.5 | 4 | 770 | 770 | 3080 | 30.2 | | | |
| | 2 | Ø10 | 2 | 508 | 12 | 520 | 1040 | 6.5 | | |
| | 3 | Ø10 | 1 | 505 | 505 | 505 | 3.2 | | | |
| | 4 | Ø10 | 3 | 445 | 445 | 1335 | 8.4 | | | |
| | 5 | Ø10 | 2 | 433 | 12 | 445 | 890 | 5.6 | | |
| | 6 | Ø10 | 2 | 188 | 200 | 400 | 2.5 | | | |
| | 7 | Ø10 | 2 | 175 | 175 | 350 | 1.1 | | | |
| | 8 | Ø10 | 2 | 903 | 915 | 1830 | 11.5 | | | |
| | 9 | Ø10 | 2 | 527 | 527 | 1054 | 6.6 | | | |
| | 10 | Ø10 | 2 | 435 | 435 | 870 | 5.5 | | | |
| | 11 | Ø12.5 | 2 | 590 | 590 | 1180 | 11.6 | | | |
| | 12 | Ø12.5 | 3 | 325 | 340 | 1020 | 10.0 | | | |
| | 13 | Ø12.5 | 1 | 260 | 260 | 260 | 2.6 | | | |
| | 14 | Ø10 | 4 | 245 | 245 | 980 | 6.2 | | | |
| | 15 | Ø10 | 2 | 118 | 130 | 260 | 1.6 | | | |
| | 16 | Ø6.3 | 101 | 151 | 15251 | 37.7 | | | | |
| Total+10%: | | | | | | | | | 165.9 | |
| V B430 | 17 | Ø10 | 2 | 167 | 12 | 181 | 362 | 2.4 | | |
| | 18 | Ø10 | 2 | 167 | 12 | 179 | 358 | 2.2 | | |
| | 19 | Ø5 | 11 | 88 | 88 | 968 | 1.5 | | | |
| Total+10%: | | | | | | | | | 5.1 | 1.7 |
| V B441=V B448 | 20 | Ø6.3 | 6 | 53 | 21 | 127 | 762 | 1.9 | | |
| | 21 | Ø16 | 3 | 19 | 757 | 19 | 795 | 2385 | 37.4 | |
| | 22 | Ø12.5 | 2 | 490 | 490 | 980 | 9.6 | | | |
| | 23 | Ø10 | 2 | 13 | 757 | 12 | 782 | 1564 | 9.8 | |
| | 24 | Ø10 | 4 | 12 | 173 | 185 | 740 | 4.6 | | |
| 25 | Ø6.3 | 40 | 151 | 151 | 6040 | 14.9 | | | | |
| Total+10%: | | | | | | | | | 86.0 | 172.0 |
| V B442 | 26 | Ø10 | 2 | 122 | 12 | 146 | 292 | 1.8 | | |
| | 27 | Ø10 | 3 | 19 | 122 | 19 | 160 | 480 | 3.0 | |
| | 28 | Ø5 | 9 | 9 | 108 | 972 | 1.5 | | | |
| Total+10%: | | | | | | | | | 5.3 | 1.7 |
| V B440=V B451 | 29 | Ø12.5 | 4 | 15 | 757 | 15 | 787 | 3148 | 30.9 | |
| | 30 | Ø12.5 | 3 | 570 | 570 | 1710 | 16.8 | | | |
| | 31 | Ø10 | 2 | 13 | 757 | 12 | 782 | 1564 | 9.8 | |
| | 32 | Ø10 | 4 | 12 | 173 | 185 | 740 | 4.6 | | |
| | 33 | Ø6.3 | 40 | 151 | 151 | 6040 | 14.9 | | | |
| Total+10%: | | | | | | | | | 84.7 | 169.4 |
| V B431 | 34 | Ø10 | 2 | 823 | 12 | 835 | 1670 | 10.5 | | |
| | 35 | Ø12.5 | 2 | 545 | 545 | 1090 | 10.7 | | | |
| | 36 | Ø12.5 | 2 | 540 | 540 | 1080 | 10.6 | | | |
| | 37 | Ø10 | 2 | 12 | 443 | 455 | 910 | 5.7 | | |
| | 38 | Ø12.5 | 3 | 320 | 320 | 960 | 9.4 | | | |
| | 39 | Ø10 | 1 | 290 | 290 | 290 | 1.8 | | | |
| | 40 | Ø10 | 1 | 170 | 170 | 170 | 1.1 | | | |
| | 41 | Ø10 | 2 | 1180 | 1180 | 2360 | 14.8 | | | |
| | 42 | Ø10 | 4 | 345 | 345 | 1380 | 8.7 | | | |
| | 43 | Ø10 | 2 | 168 | 180 | 360 | 2.3 | | | |
| | 44 | Ø10 | 2 | 143 | 12 | 155 | 310 | 1.9 | | |
| | 45 | Ø12.5 | 2 | 555 | 555 | 1110 | 10.9 | | | |
| | 46 | Ø12.5 | 2 | 260 | 275 | 550 | 5.4 | | | |
| | 47 | Ø16 | 1 | 210 | 210 | 210 | 3.3 | | | |
| | 48 | Ø10 | 1 | 185 | 185 | 185 | 1.2 | | | |
| | 49 | Ø10 | 2 | 100 | 100 | 200 | 1.3 | | | |
| 50 | Ø6.3 | 82 | 151 | 151 | 12382 | 30.6 | | | | |
| 51 | Ø5 | 5 | 128 | 640 | 1.0 | | | | | |
| Total+10%: | | | | | | | | | 143.2 | 1.1 |
| V B452 | 52 | Ø10 | 2 | 266 | 12 | 290 | 580 | 3.6 | | |
| | 53 | Ø10 | 2 | 266 | 12 | 278 | 556 | 3.5 | | |
| | 54 | Ø5 | 18 | 86 | 86 | 1548 | 2.6 | | | |
| Total+10%: | | | | | | | | | 7.8 | 2.4 |
| V B453 | 55 | Ø10 | 2 | 155 | 12 | 179 | 358 | 2.2 | | |
| | 56 | Ø10 | 3 | 12 | 155 | 12 | 179 | 537 | 3.4 | |
| | 57 | Ø5 | 9 | 86 | 86 | 774 | 1.2 | | | |
| Total+10%: | | | | | | | | | 6.2 | 1.3 |
| V B454 | 58 | Ø10 | 2 | 166 | 12 | 190 | 380 | 2.4 | | |
| | 59 | Ø10 | 1 | 166 | 166 | 166 | 1.0 | | | |
| | 60 | Ø10 | 2 | 123 | 135 | 270 | 1.7 | | | |
| | 61 | Ø10 | 3 | 181 | 14 | 195 | 585 | 3.7 | | |
| | 62 | Ø10 | 2 | 24 | 122 | 24 | 170 | 340 | 2.1 | |
| | 63 | Ø10 | 2 | 96 | 14 | 110 | 220 | 1.4 | | |
| | 64 | Ø5 | 9 | 108 | 972 | 1.5 | | | | |
| | 65 | Ø6.3 | 7 | 151 | 1057 | 2.6 | | | | |
| Total+10%: | | | | | | | | | 16.4 | 1.7 |
| V B447 | 66 | Ø6.3 | 6 | 53 | 21 | 127 | 762 | 1.9 | | |
| | 67 | Ø16 | 3 | 19 | 757 | 19 | 795 | 2385 | 37.4 | |
| | 68 | Ø12.5 | 2 | 495 | 495 | 990 | 9.7 | | | |
| | 69 | Ø10 | 2 | 13 | 757 | 12 | 782 | 1564 | 9.8 | |
| | 70 | Ø10 | 4 | 12 | 173 | 185 | 740 | 4.6 | | |
| | 71 | Ø6.3 | 40 | 151 | 151 | 6040 | 14.9 | | | |
| | Total+10%: | | | | | | | | | 86.1 |
| Ø5: | | | | | | | | | 0.0 | 10.1 |
| Ø6.3: | | | | | | | | | 166.3 | 0.0 |
| Ø10: | | | | | | | | | 235.7 | 0.0 |
| Ø12.5: | | | | | | | | | 248.4 | 0.0 |
| Ø16: | | | | | | | | | 127.0 | 0.0 |
| Total: | | | | | | | | | 777.4 | 10.1 |

| REVISÕES | | |
|----------|-------|------|
| NR. | AUTOR | DATA |
| - | - | - |
| - | - | - |
| - | - | - |
| - | - | - |
| - | - | - |

| | | | |
|---|--------------------|------------------------------|-------------------|
| PARA APROVAÇÃO | ASS. | DATA: | ORDEM DE SERVIÇO: |
| LIBERADO P/ FABRICAÇÃO | ASS. ENG. REINALDO | 16/08/2010 | 01618 |
| CONNECT DESIGN | | TODOS OS DIREITOS RESERVADOS | |
| PROIBIDA A REPRODUÇÃO SEM AUTORIZAÇÃO PREVIA | | | |
| Rua João Pessoa, 1890 - CEP 18602-140 Botucatu - SP | | Data: 16/08/2010 | |
| Fone/Fax + 55 14 3815-1873 / 3813-4563 | | Data: 16/08/2010 | |
| connect@connectdesign.com.br | | Data: 16/08/2010 | |
| www.connectdesign.com.br | | Arquivo: STR-01618-038-REV00 | |
| CREA: 1161900 | | | |
| TECNOLOGIA EM PROJETOS | | | |
| DIMENSIONADO: CM | | | |

ASSESSORIA TÉCNICA DE PLANEJAMENTO
E ENGENHARIA
HOSPITAL DAS CLÍNICAS
UNESP - Campus de Botucatu - Distrito de Rubião Junior, S/N
BOTUCATU, SP - CEP 18.618-000
FONE (014) 3811-6050 - E-MAIL: atpe@fmb.unesp.br

Hospital das Clínicas
Distrito de Rubião Junior, s/n | CEP 18618-070 | Botucatu | São Paulo
Tel. (14) 3811-6215 | 3811-6218 | 3811-6050 | www.hcfmb.unesp.br

| | | | |
|---------|---|---------|-------|
| OBRA | AMPLIAÇÃO DO AMBULATÓRIO MÉDICO DE ESPECIALIDADES | REVISÃO | 00 |
| LOCAL | HOSPITAL DAS CLÍNICAS - BOTUCATU | ESCALAS | GERAL |
| FRANCHA | ARMAÇÃO DAS VIGAS DA SEGUNDA LAJE- SETOR B- COTA 103.50 | | |

ESTRUTURAL
FOLHA
38/56