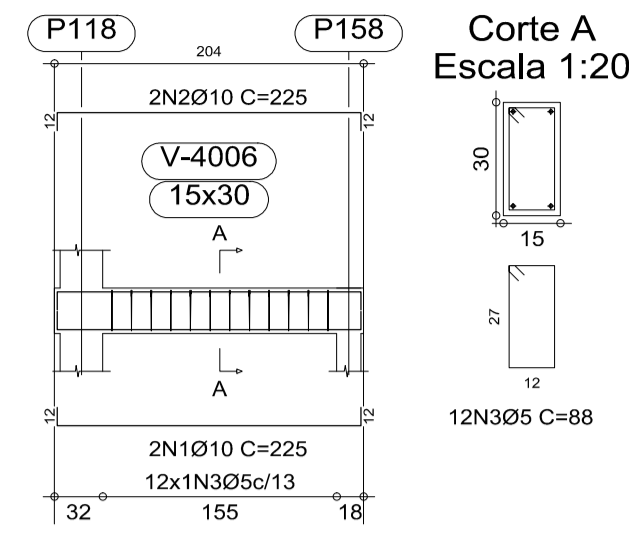
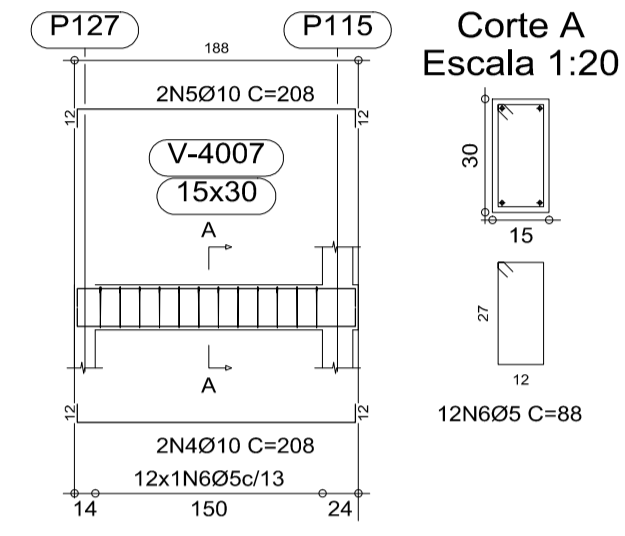


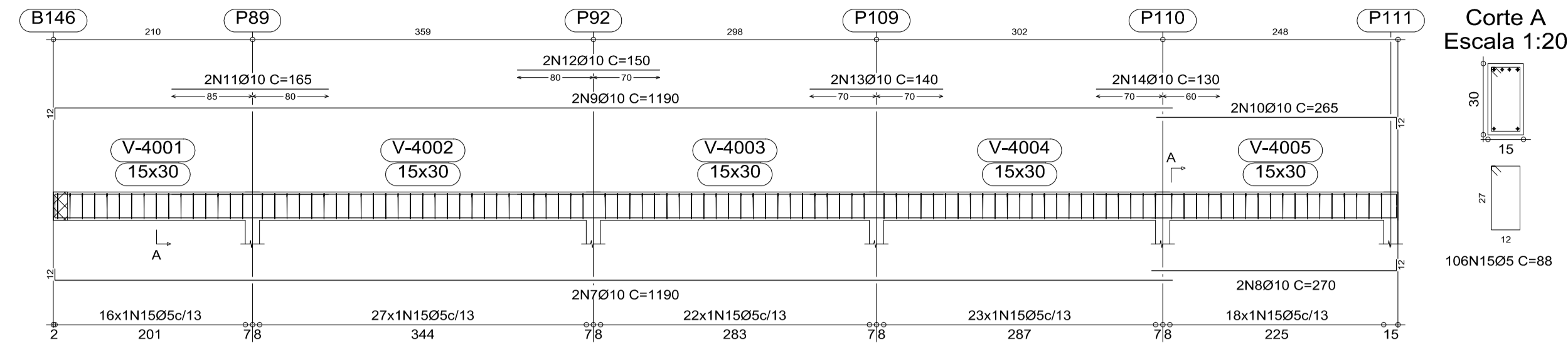
V B402
Escala 1:50



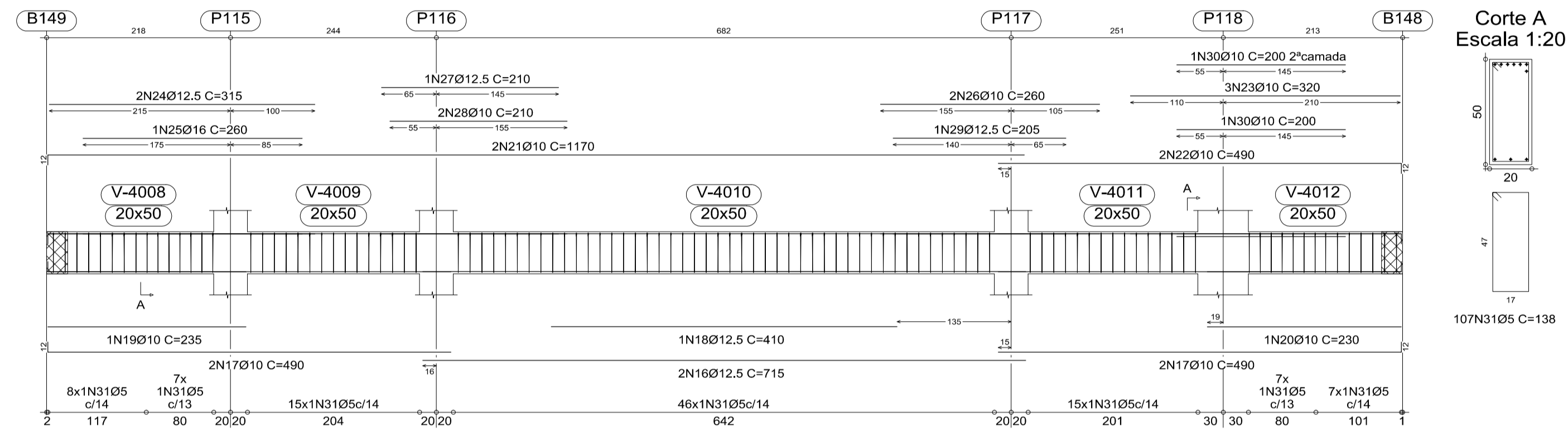
V B403
Escala 1:50



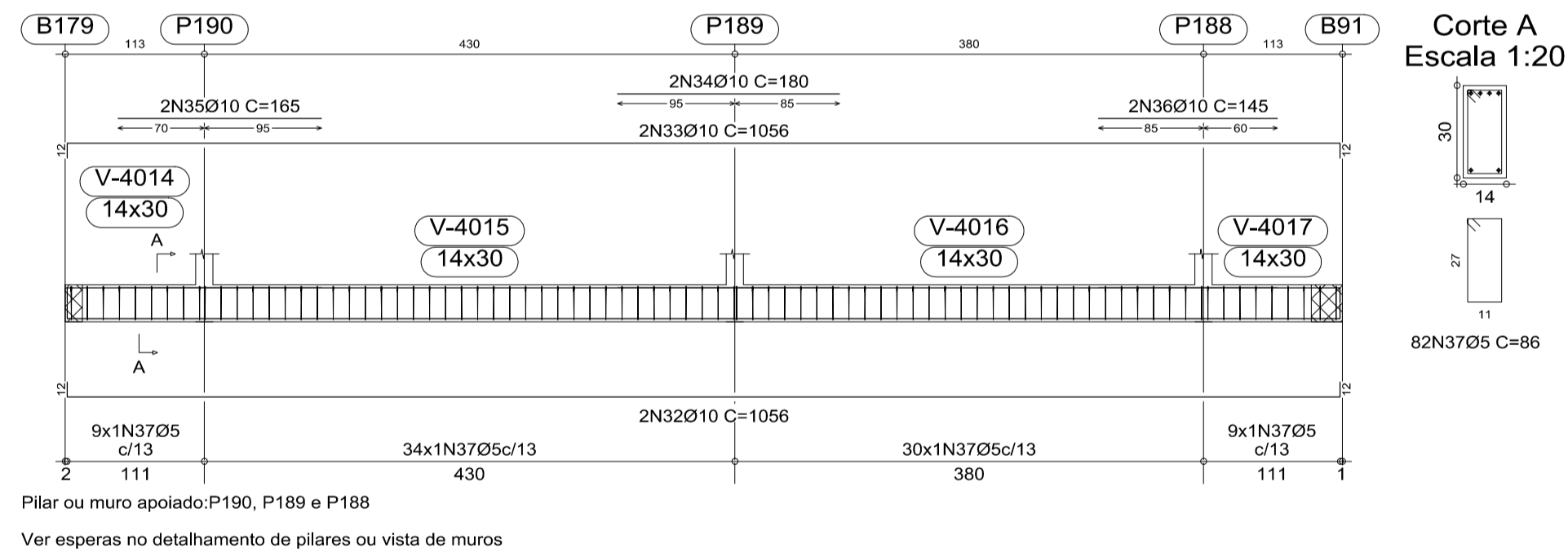
V B401
Escala 1:50



V B404
Escala 1:50

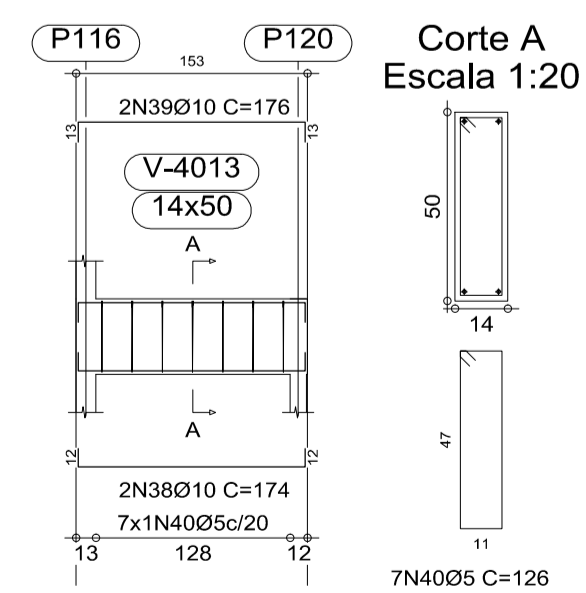


V B406
Escala 1:50

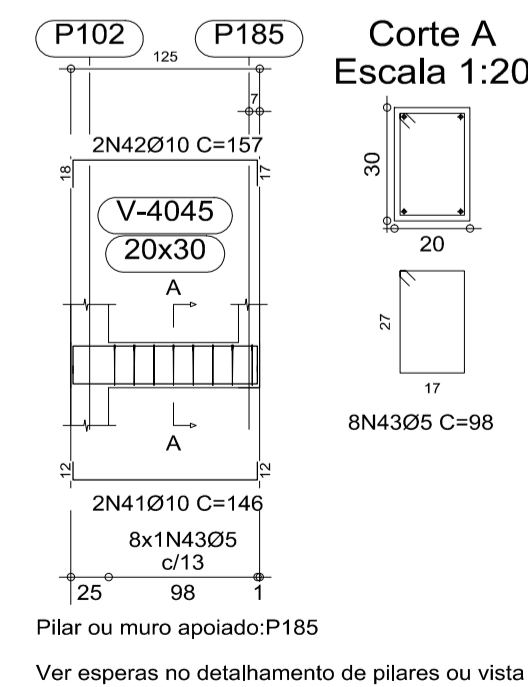


Pilar ou muro apoiado: P190, P189 e P188
Ver esperas no detalhamento de pilares ou vista de muros

V B405
Escala 1:50

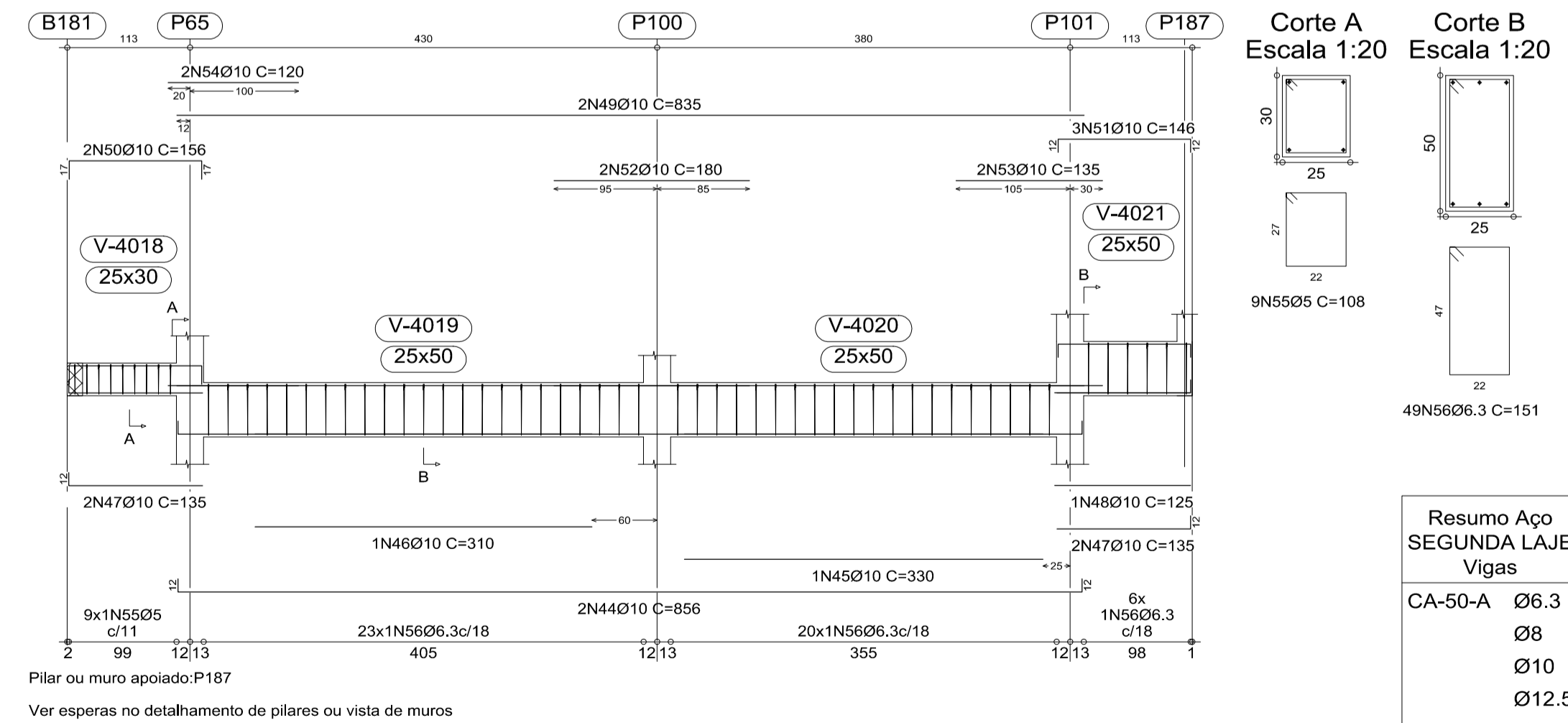


V B413
Escala 1:50



Pilar ou muro apoiado: P185
Ver esperas no detalhamento de pilares ou vista de muros

V B407
Escala 1:50

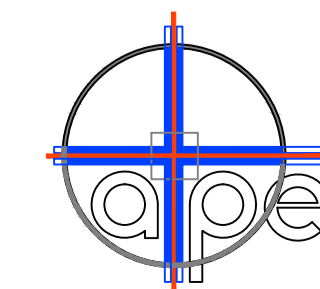


Pilar ou muro apoiado: P187
Ver esperas no detalhamento de pilares ou vista de muros

Elemento	Pos.	Diam.	Q.	Dob. (cm)	Reta (cm)	Dob. (cm)	Comp. (cm)	Total (cm)	CA-50-A (kg)	CA-60-B (kg)		
V B402	1	Ø10	2	12	201	12	225	450	2.8			
	2	Ø10	2	12	201	12	225	450	2.8			
	3	Ø5	12					1056		1.7		
Total+10%:									6.2	1.9		
V B403	4	Ø10	2	12	184	12	208	416	2.6			
	5	Ø10	2	12	184	12	208	416	2.6			
	6	Ø5	12					1056		1.7		
Total+10%:									5.7	1.9		
V B401	7	Ø10	2	12	1178	12	1190	2380	14.9			
	8	Ø10	2	12	258	12	270	540	3.4			
	9	Ø10	2	12	1178	12	1190	2380	14.9			
	10	Ø10	2	12	253	12	265	530	3.3			
	11	Ø10	2	12	165	12	165	330	2.1			
	12	Ø10	2	12	150	12	150	300	1.9			
	13	Ø10	2	12	140	12	140	280	1.8			
	14	Ø10	2	12	130	12	130	260	1.6			
	15	Ø5	106					9328		14.6		
	Total+10%:									48.3	16.1	
	V B404	16	Ø12.5	2	715	12	715	1430	14.0			
		17	Ø10	4	478	12	490	980	12.3			
		18	Ø12.5	1	410	12	410	820	4.0			
		19	Ø10	1	235	12	235	470	1.5			
		20	Ø10	1	230	12	230	460	1.4			
21		Ø10	2	1158	12	1170	2340	14.7				
22		Ø10	2	478	12	490	980	12.3				
23		Ø10	3	320	12	320	640	4.0				
24		Ø12.5	2	315	12	315	630	3.2				
25		Ø16	1	260	12	260	520	2.6				
26		Ø10	2	260	12	260	520	2.6				
27		Ø12.5	1	210	12	210	420	2.1				
28		Ø10	2	210	12	210	420	2.1				
29		Ø12.5	1	205	12	205	410	2.0				
30		Ø10	2	200	12	200	400	2.0				
31		Ø5	105				138	14490		22.7		
Total+10%:									91.2	25.0		
V B406	32	Ø10	2	1032	12	1056	2112	13.3				
	33	Ø10	2	1032	12	1056	2112	13.3				
	34	Ø10	2	180	12	180	360	2.3				
	35	Ø10	2	165	12	165	330	2.1				
	36	Ø10	2	145	12	145	290	1.8				
	37	Ø5	82				98	7052		11.1		
	Total+10%:									36.1	12.2	
V B405	38	Ø10	2	150	12	174	348	2.2				
	39	Ø10	2	150	12	174	348	2.2				
	40	Ø5	7				126	882		1.4		
	Total+10%:									4.8	1.5	
V B413	41	Ø10	2	122	12	146	292	1.8				
	42	Ø10	2	18	122	17	157	314	2.0			
	43	Ø5	8				98	784		1.2		
Total+10%:									4.2	1.3		
V B407	44	Ø10	2	832	12	856	1712	10.8				
	45	Ø10	1	330	12	330	660	4.1				
	46	Ø10	1	310	12	310	620	3.9				
	47	Ø10	4	123	12	135	540	3.4				
	48	Ø10	1	125	12	125	250	1.6				
	49	Ø10	2	835	12	835	1670	10.5				
	50	Ø10	2	122	17	156	312	2.0				
	51	Ø10	3	122	12	145	438	2.8				
	52	Ø10	2	180	12	180	360	2.3				
	53	Ø10	2	135	12	135	270	1.7				
	54	Ø10	2	120	12	120	240	1.5				
	55	Ø5	9				108	972		1.5		
	56	Ø6.3	49				151	7399		18.3		
	Total+10%:									63.9	1.7	
										Ø5:	0.0	61.6
										Ø6.3:	20.1	0.0
									Ø10:	204.7	0.0	
									Ø12.5:	31.1	0.0	
									Ø16:	4.5	0.0	
									Total:	260.4	61.6	

REVISÕES			
NR.		AUTOR	DATA
-	-	-	-
-	-	-	-
-	-	-	-
-	-	-	-
-	-	-	-

PARA APROVAÇÃO	ASS.	DATA:	ORDEN DE SERVIÇO:
LIBERADO P/ FABRICAÇÃO	ASS. ENG. REINALDO	16/08/2010	01618
CONNECT DESIGN		TODOS OS DIREITOS RESERVADOS	
PROIBIDA A REPRODUÇÃO SEM AUTORIZAÇÃO PREVIA			
Proj:	ENG. REINALDO	Data:	16/08/2010
Proj:	CONNECT	Data:	16/08/2010
Dimensiones:	CM	Arquivo:	STR-01618-036-REV00



ASSESSORIA TÉCNICA DE PLANEJAMENTO
E ENGENHARIA
HOSPITAL DAS CLÍNICAS
UNESP - Campus de Botucatu - Distrito de Rubião Junior, S/N
BOTUCATU, SP - CEP 18.618-000
FONE (014) 3811-6050 - E-MAIL: atpe@fmb.unesp.br

Hospital das Clínicas Distrito de Rubião Junior, s/n CEP 13518-070 Botucatu São Paulo Tel. (14) 3811-6215 3811-6218 3811-6050 www.hclmb.unesp.br		ESTRUTURAL AMPLIAÇÃO DO AMBULATÓRIO MÉDICO DE ESPECIALIDADES LOCAL: HOSPITAL DAS CLÍNICAS - BOTUCATU FRANCHA: ARMAÇÃO DAS VIGAS DA SEGUNDA LAJE - SETOR B - COTA 103.50	REVISÃO 00 ESCALAS GERAL	FOLHA 36/56
---	--	---	-----------------------------------	------------------------------

Resumo Aço	SEGUNDA LAJE Vigas	Comp. total (m)	Peso+10% (kg)	Total
CA-50-A	Ø6.3	2723.0	741	
	Ø8	177.1	76	
	Ø10	2689.6	1858	
	Ø12.5	823.4	889	
	Ø16	247.8	428	3992
CA-60-B	Ø5	1651.7	285	
Total				4277