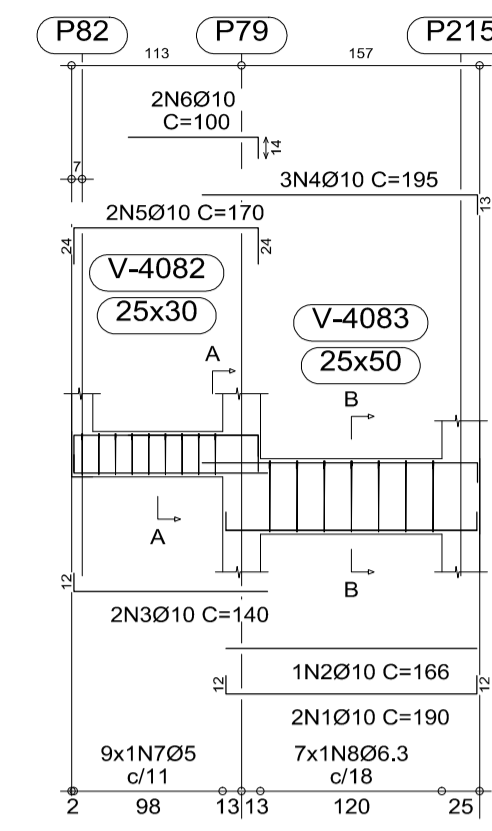
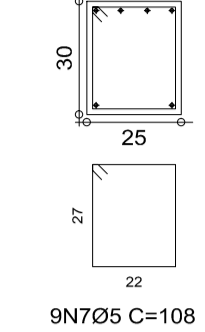


V A424
Escala 1:50

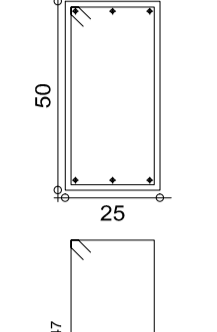


Pilar ou muro apoiado: P82
Ver esperas no detalhamento de pilares ou vista de muros

Corte A
Escala 1:20



Corte B
Escala 1:20

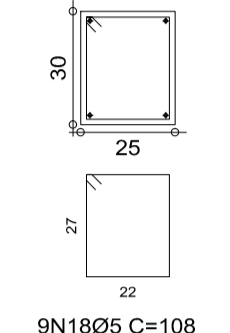


V A430
Escala 1:50

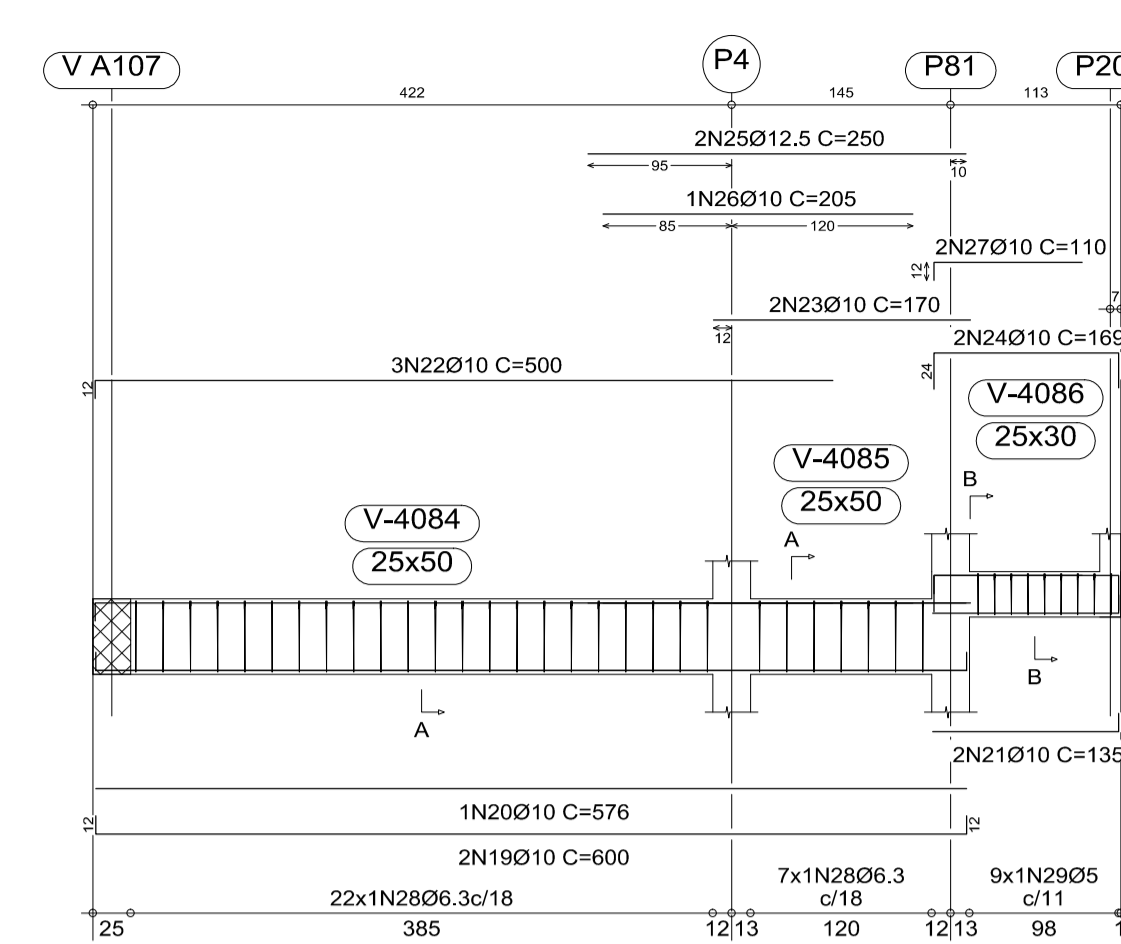


Pilar ou muro apoiado: P201
Ver esperas no detalhamento de pilares ou vista de muros

Corte A
Escala 1:20

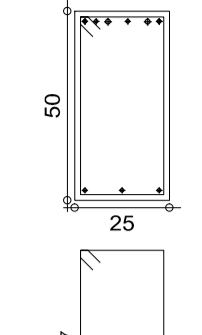


V A425
Escala 1:50

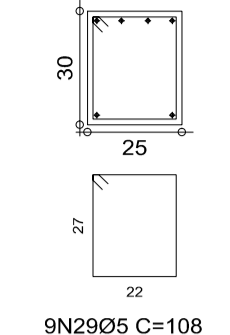


Pilar ou muro apoiado: P202
Ver esperas no detalhamento de pilares ou vista de muros

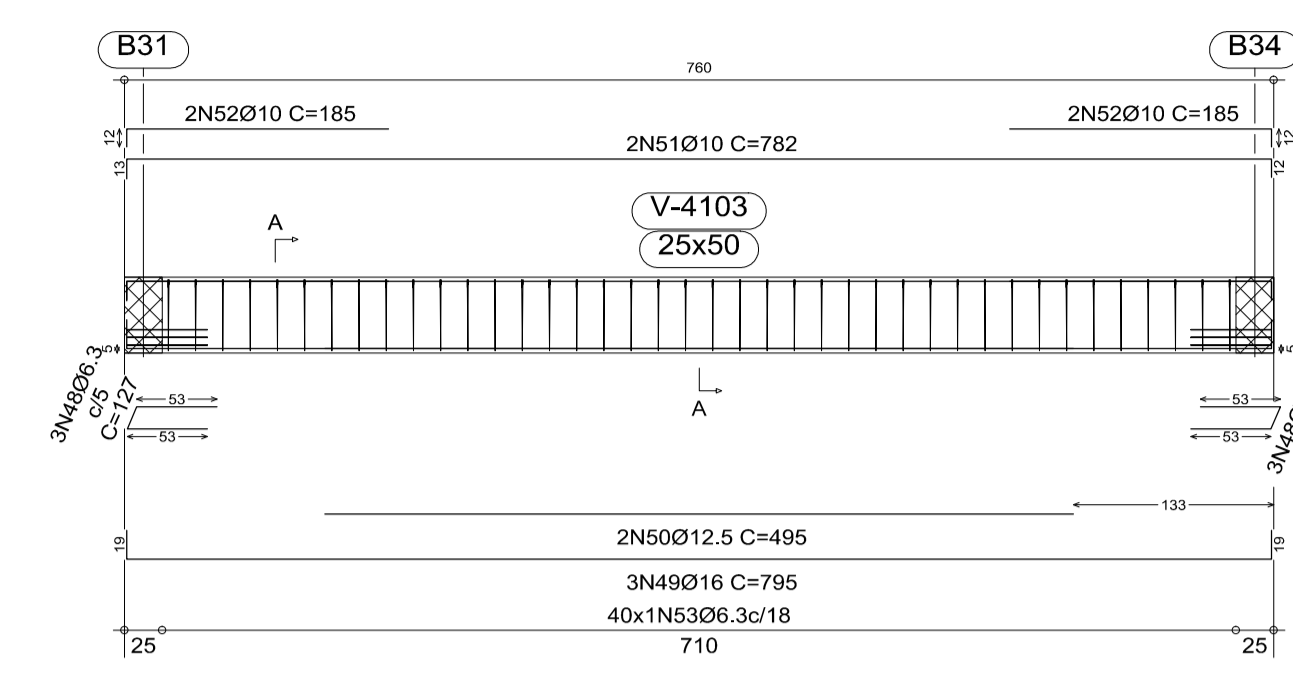
Corte A
Escala 1:20



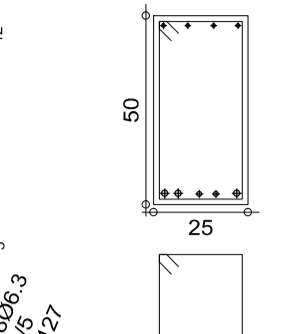
Corte B
Escala 1:20



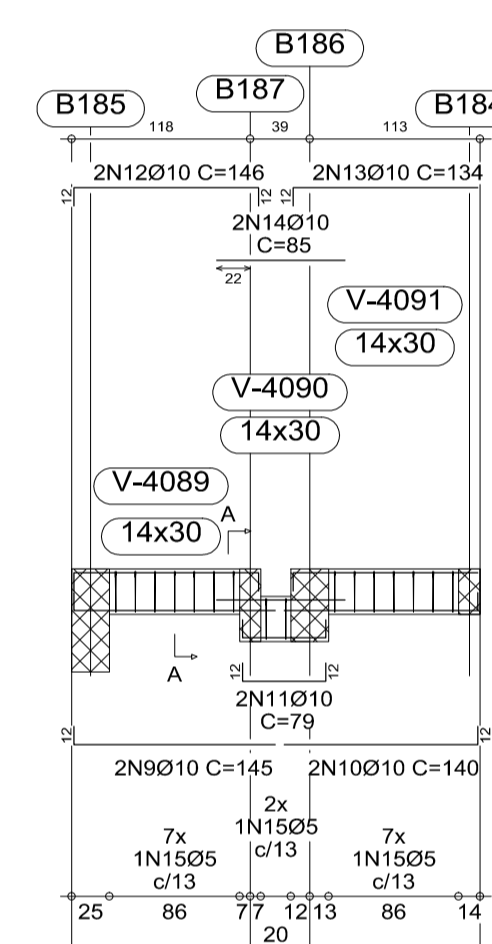
V A439
Escala 1:50



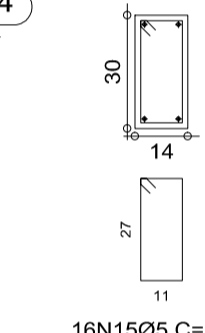
Corte A
Escala 1:20



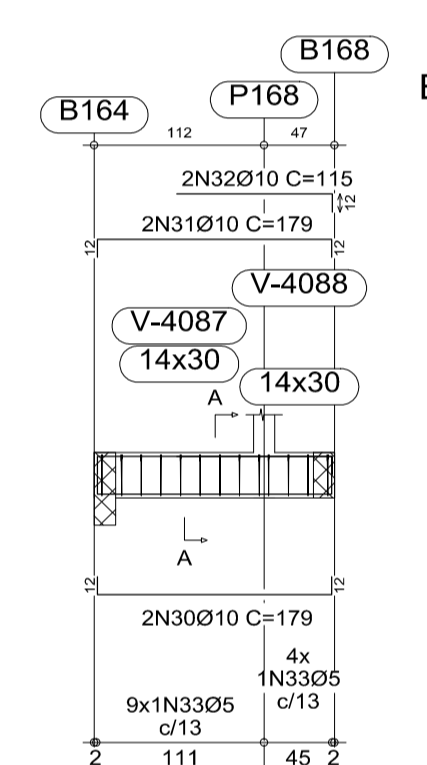
V A427
Escala 1:50



Corte A
Escala 1:20

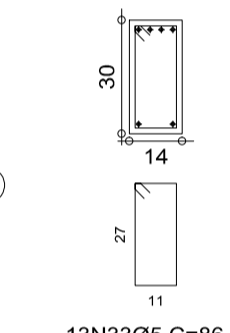


V A426
Escala 1:50

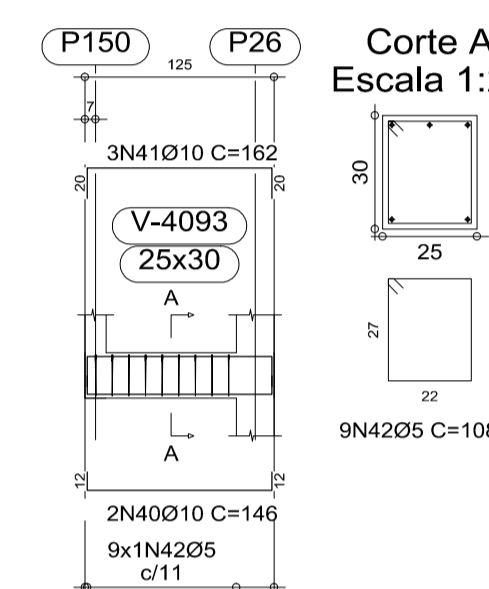


Pilar ou muro apoiado: P168
Ver esperas no detalhamento de pilares ou vista de muros

Corte A
Escala 1:20

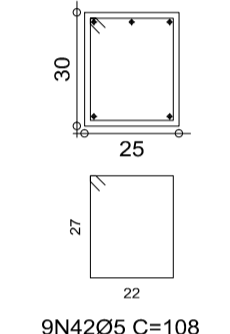


V A429
Escala 1:50

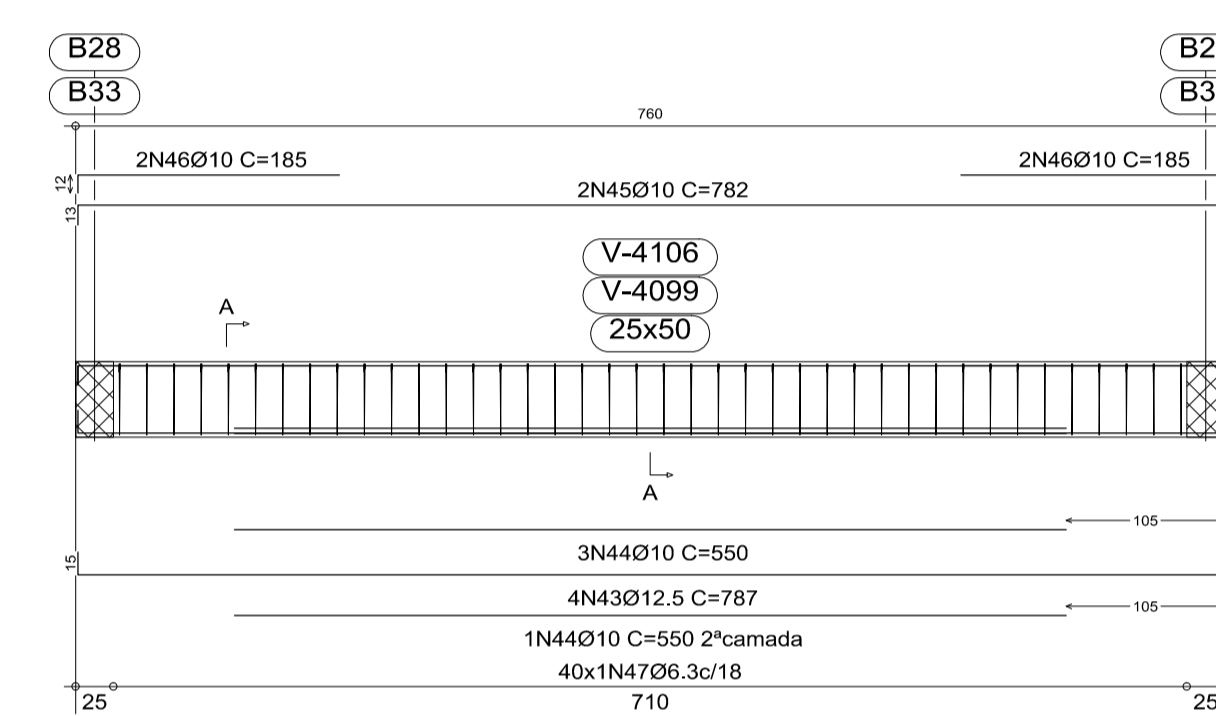


Pilar ou muro apoiado: P150
Ver esperas no detalhamento de pilares ou vista de muros

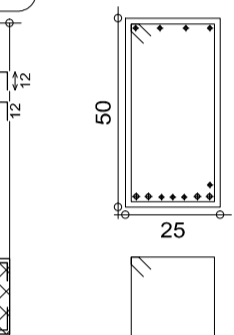
Corte A
Escala 1:20



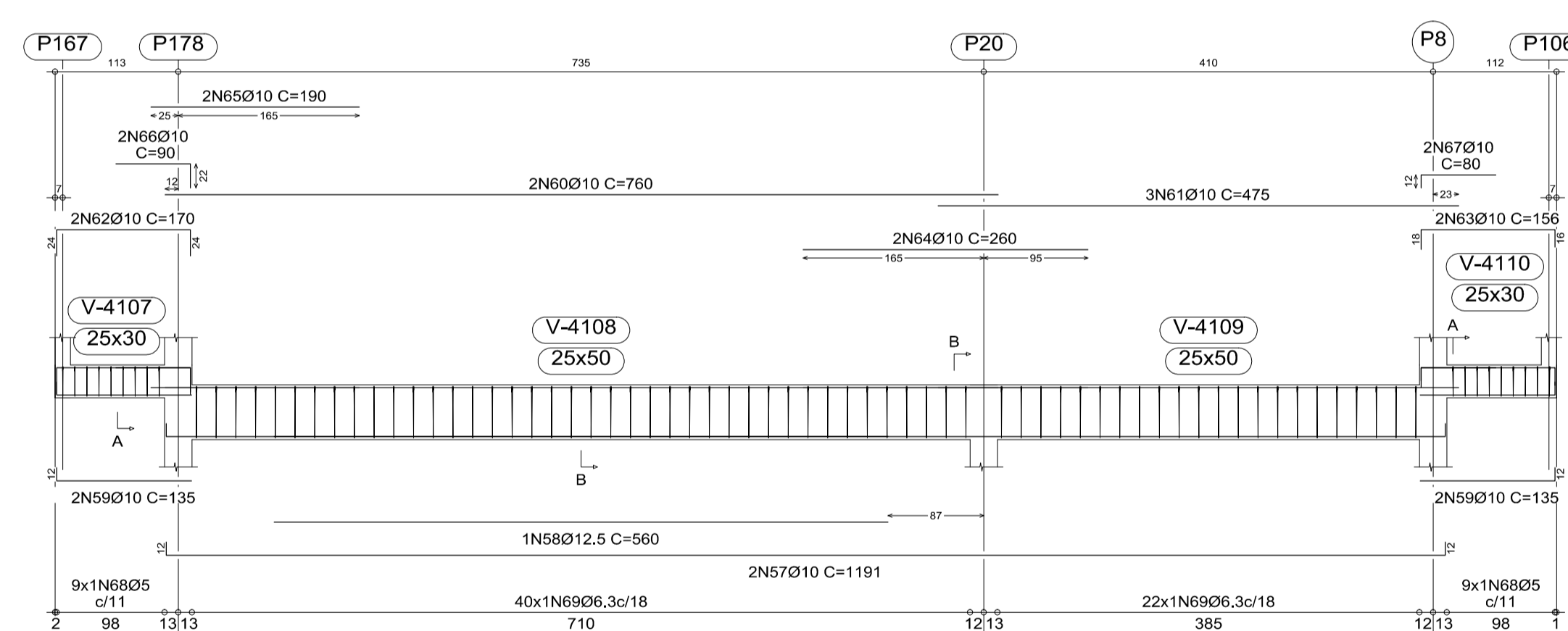
V A435
V A442
Escala 1:50



Corte A
Escala 1:20

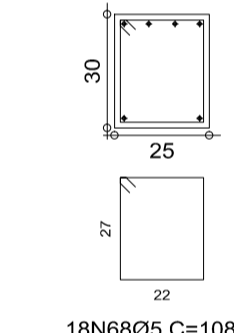


V A443
Escala 1:50

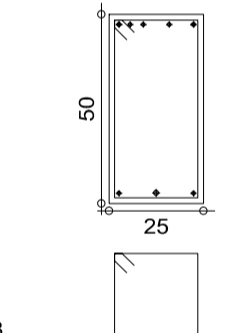


Pilar ou muro apoiado: P167 e P106
Ver esperas no detalhamento de pilares ou vista de muros

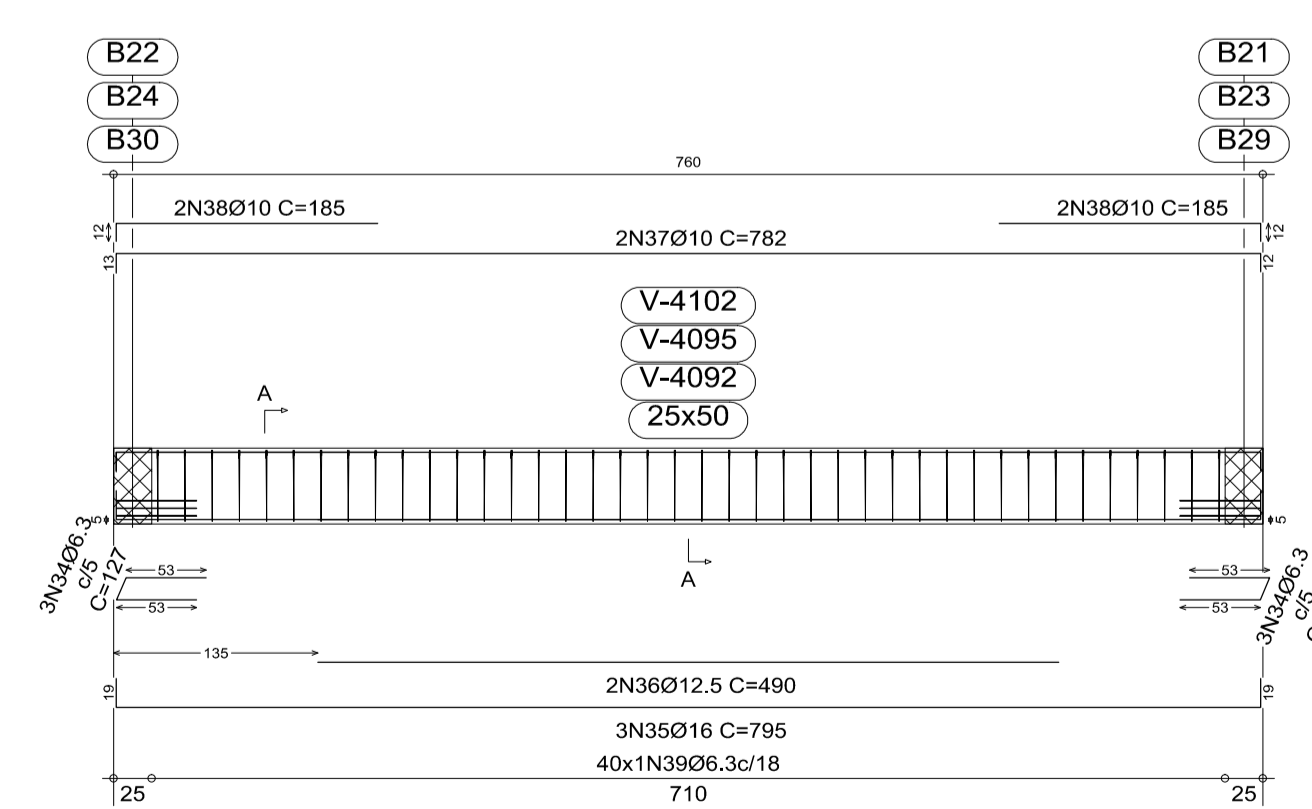
Corte A
Escala 1:20



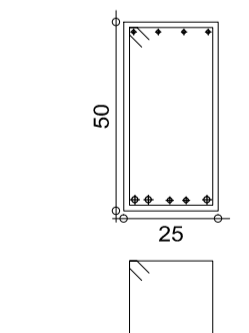
Corte B
Escala 1:20



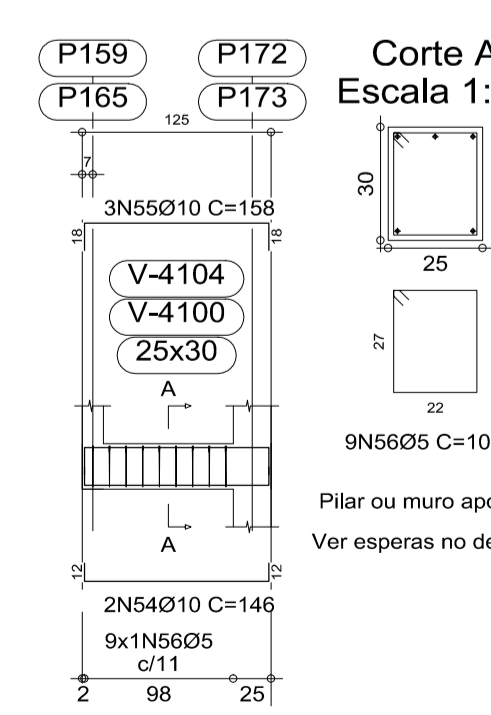
V A428
V A431
V A438
Escala 1:50



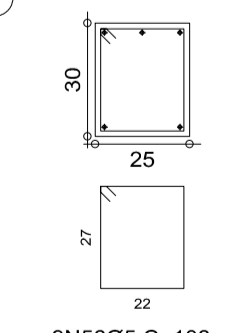
Corte A
Escala 1:20



V A436
V A440
Escala 1:50



Corte A
Escala 1:20



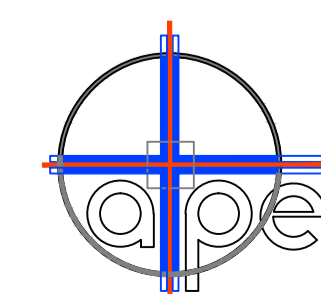
Pilar ou muro apoiado: P159 e P165
Ver esperas no detalhamento de pilares ou vista de muros

Elemento	Pos.	Diam.	Q.	Doç. (cm)	Reça (cm)	Doç. (cm)	Comp. (cm)	Total (cm)	CA-50-A (kg)	CA-60-B (kg)	
V A424	1	Ø10	2	12	166	12	190	380	2.4		
	2	Ø10	1		166	12	166	166	1.0		
	3	Ø10	2	12	128	12	140	280	1.8		
	4	Ø10	3		182	13	195	585	3.7		
	5	Ø10	2	24	122	24	170	340	2.1		
	6	Ø10	2		86	14	100	200	1.3		
	7	Ø5	9				108	972		1.5	
	8	Ø6.3	7				151	1057	2.6		
Total+10%:									16.4	1.7	
V A427	9	Ø10	2	12	133	12	145	290	1.8		
	10	Ø10	2		128	12	140	280	1.8		
	11	Ø10	2	12	55	12	79	158	1.0		
	12	Ø10	2	12	122	12	146	292	1.8		
	13	Ø10	2	12	85	12	134	268	1.7		
	14	Ø10	2		85	12	100	200	1.3		
	15	Ø5	16				86	1376		2.2	
Total+10%:									10.1	2.4	
V A430	16	Ø10	2	12	122	12	146	292	1.8		
	17	Ø10	2	21	122	20	163	326	2.0		
	18	Ø5	9				108	972		1.5	
Total+10%:									4.2	1.7	
V A425	19	Ø10	2	12	576	12	600	1200	7.5		
	20	Ø10	1		576	12	576	576	3.6		
	21	Ø10	2	123	12	123	246	246	1.7		
	22	Ø10	3	12	488	12	500	1500	9.4		
	23	Ø10	2		170	12	170	340	2.1		
	24	Ø10	2	24	122	23	169	338	2.1		
	25	Ø12.5	2		250	250	500	500	4.9		
	26	Ø10	1		205	205	410	410	3.3		
	27	Ø10	2	12	98	12	110	220	1.4		
	28	Ø6.3	29				151	4379	10.8		
	29	Ø5	9				108	972		1.5	
	Total+10%:									49.3	1.7
	V A426	30	Ø10	2	12	155	12	179	358	2.2	
		31	Ø10	2	12	155	12	179	358	2.2	
32		Ø10	2		103	12	115	230	1.4		
33		Ø5	13				86	1118		1.8	
Total+10%:									6.4	2.0	
V A428=V A431 V A438	34	Ø6.3	6	53	21	53	127	762	1.9		
	35	Ø16	3	19	757	19	795	2385	37.4		
	36	Ø12.5	2		490	490	980	980	9.6		
	37	Ø10	2	13	757	12	782	1564	9.8		
38	Ø10	4		173	185	740	740	4.6			
39	Ø6.3	40				151	6040	14.9			
Total+10%:									86.0	258.0	
V A429	40	Ø10	2	12	122	12	146	292	1.8		
	41	Ø10	3	20	122	20	162	486	3.1		
	42	Ø5	9				108	972		1.5	
	Total+10%:									5.4	1.7
V A435=V A442	43	Ø12.5	4	15	757	15	787	3148	30.9		
	44	Ø10	4		550	550	2200	2200	13.8		
	45	Ø10	2	13	757	12	782	1564	9.8		
	46	Ø10	4	12	173	185	740	740	4.6		
	47	Ø6.3	40				151	6040	14.9		
	Total+10%:									81.4	262.8
	V A439	48	Ø6.3	6	53	21	53	127	762	1.9	
49		Ø16	3	19	757	19	795	2385	37.4		
50		Ø12.5	2		495	495	990	990	9.7		
51		Ø10	2	13	757	12	782	1564	9.8		
52	Ø10	4	12	173	185	740	740	4.6			
53	Ø6.3	40				151	6040	14.9			
Total+10%:									86.1	258.0	
V A436=V A440	54	Ø10	2	12	122	12	146	292	1.8		
	55	Ø10	3	18	122	18	158	474	3.0		
	56	Ø5	9				108	972		1.5	
Total+10%:									5.3	1.7	
V A443	57	Ø10	2	12	1167	12	1191	2382	15.0		
	58	Ø12.5	1		560	560	560	560	5.5		
	59	Ø10	4	12	123	135	540	540	3.4		
	60	Ø10	2		760	760	1520	1520	9.5		
	61	Ø10	3		475	475	1425	1425	8.9		
	62	Ø10	2	24	122	24	170	340	2.1		
	63	Ø10	2	18	122	16	156	312	2.0		
	64	Ø10	2		260	260	520	520	3.3		
	65	Ø10	2		190	190	380	380	2.4		
	66	Ø10	2	68	22	90	180	1.1			
	67	Ø10	2	12	68	80	160	1.0			
68	Ø5	18				108	1944		3.1		
69	Ø6.3	62				151	9362	23.1			
Total+10%:									85.0	3.4	
Ø5:									0.0	18.0	
Ø6.3:									147.0	0.0	
Ø10:									261.0	0.0	
Ø12.5:									121.9	0.0	
Ø16:									164.4	0.0	
Total:									694.3	18.0	

SEGUNDA LAJE
Desenho de vigas
Concreto: C20, em geral
Aço: CA-50-A e CA-60-B
Escala vigas: 1:50
Escala seções: 1:20

REVISÕES			
NR.		AUTOR	DATA
-	-	-	-
-	-	-	-
-	-	-	-
-	-	-	-
-	-	-	-
-	-	-	-

PARA APROVAÇÃO	ASS:	DATA:	ORDEM DE SERVIÇO:
X LIBERADO P/ FABRICAÇÃO	ASS: ENG. REINALDO	DATA: 16/08/2010	01618
CONNECT DESIGN [®]		TODOS OS DIREITOS RESERVADOS	
PROIBIDA A REPRODUÇÃO SEM AUTORIZAÇÃO PRÉVIA.			
Eng. REINALDO		Data: 16/08/2010	
Proj: CONNECT		Data: 16/08/2010	
Dimensões: CM		Arquivo: STR-01618-033-REV00	



ASSESSORIA TÉCNICA DE PLANEJAMENTO
E ENGENHARIA
HOSPITAL DAS CLÍNICAS
UNESP - Campus de Botucatu - Distrito de Rubião Junior, S/N
BOTUCATU, SP - CEP 18.618-000
FONE (014) 3811-6050 - E-MAIL: alpe@fmb.unesp.br

Hospital das Clínicas Distrito de Rubião Junior, s/n CEP 18618-070 Botucatu São Paulo Tel. (14) 3811-6215 3811-6218 3811-6050 www.hclmb.unesp.br	
OBRA AMPLIAÇÃO DO AMBULATÓRIO MÉDICO DE ESPECIALIDADES	ESTRUTURAL
LOCAL HOSPITAL DAS CLÍNICAS - BOTUCATU	REVISÃO 00
FRANCHA ARMAÇÃO DAS VIGAS DA SEGUNDA LAJE- SETOR A- COTA 103.50	ESCALAS GERAL
FOLHA 33/56	