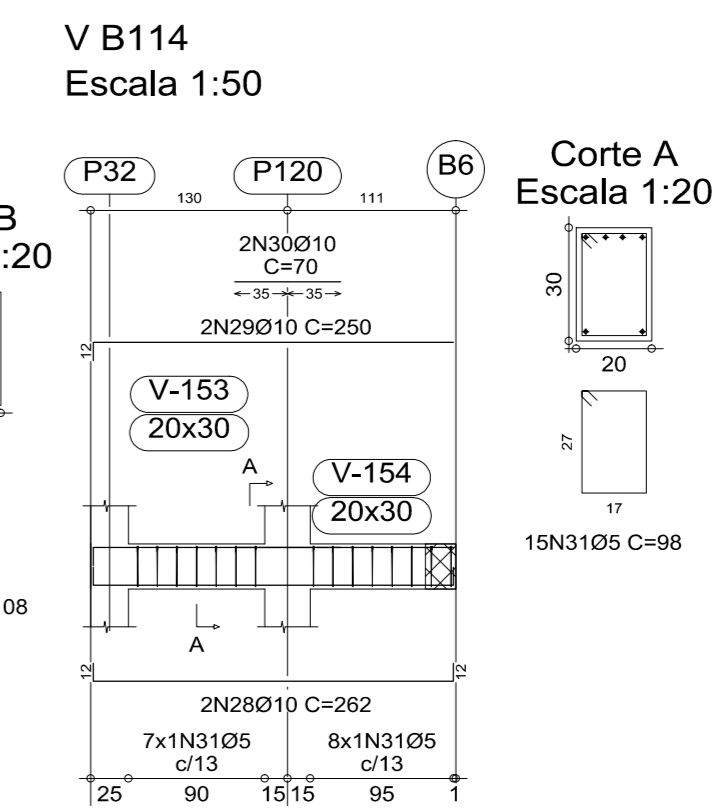
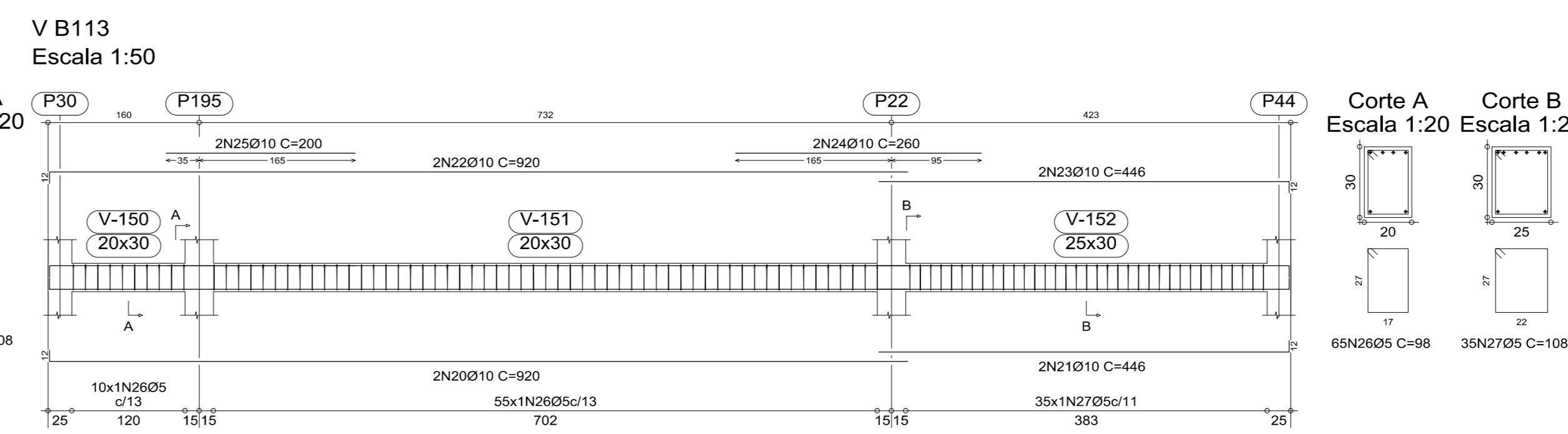
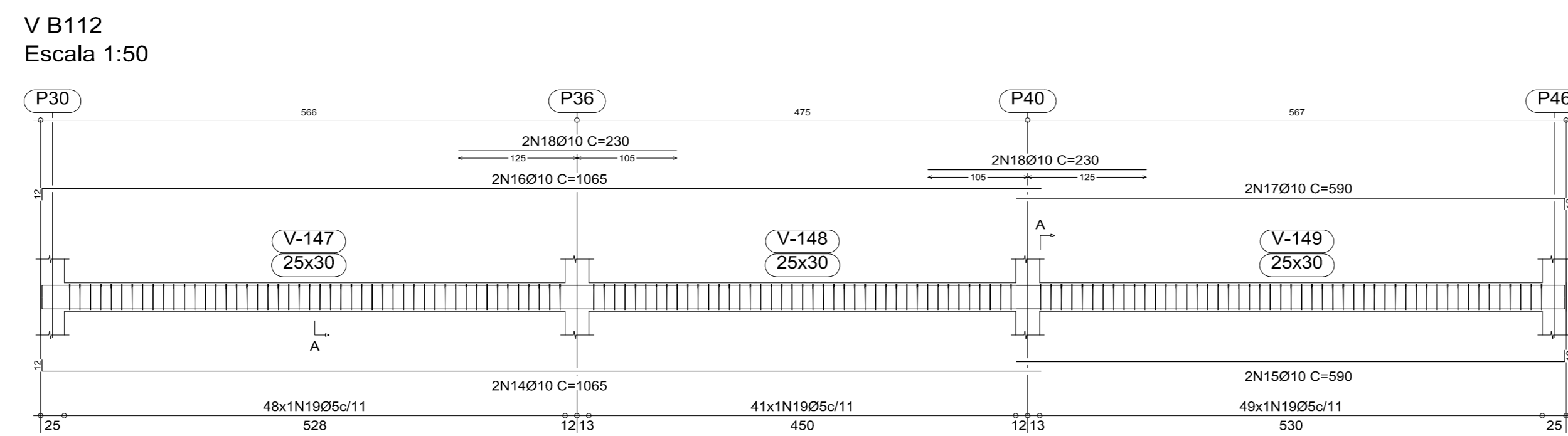
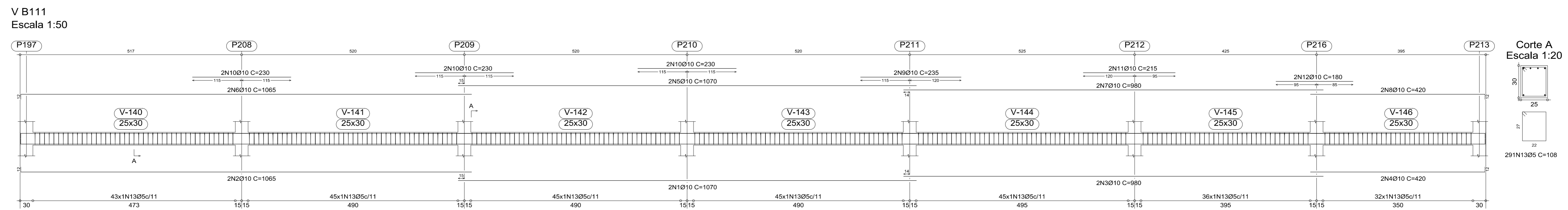
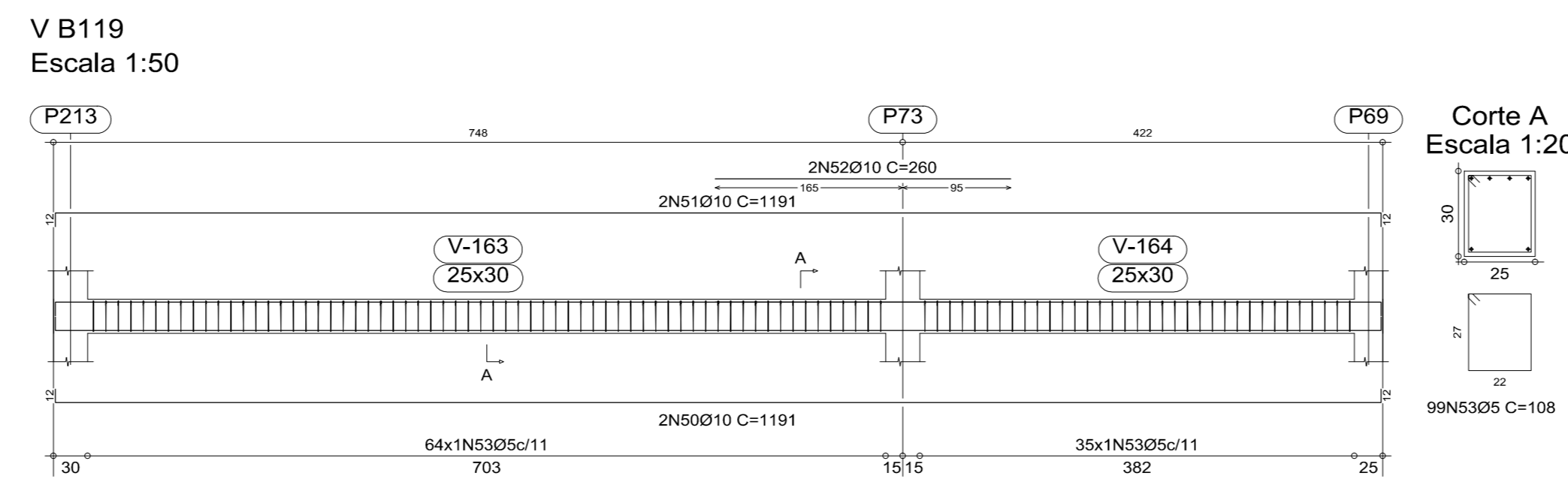
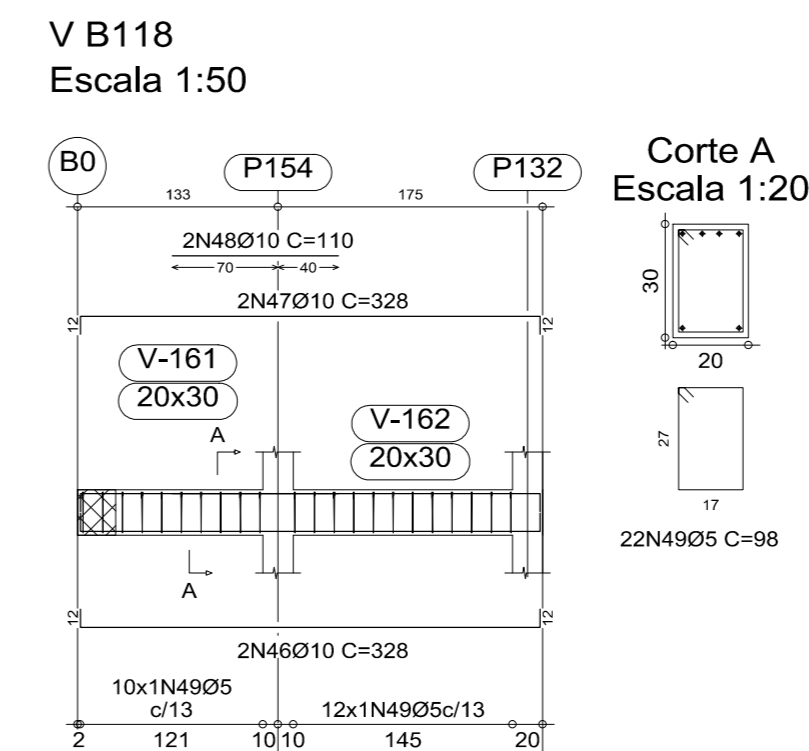
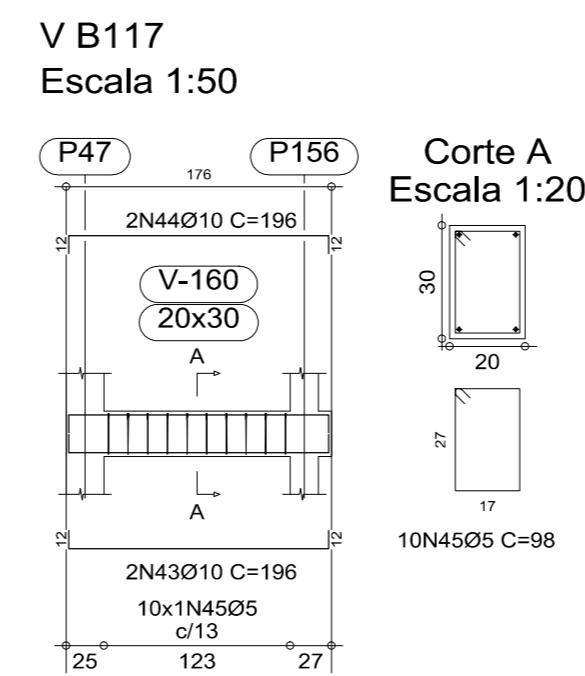
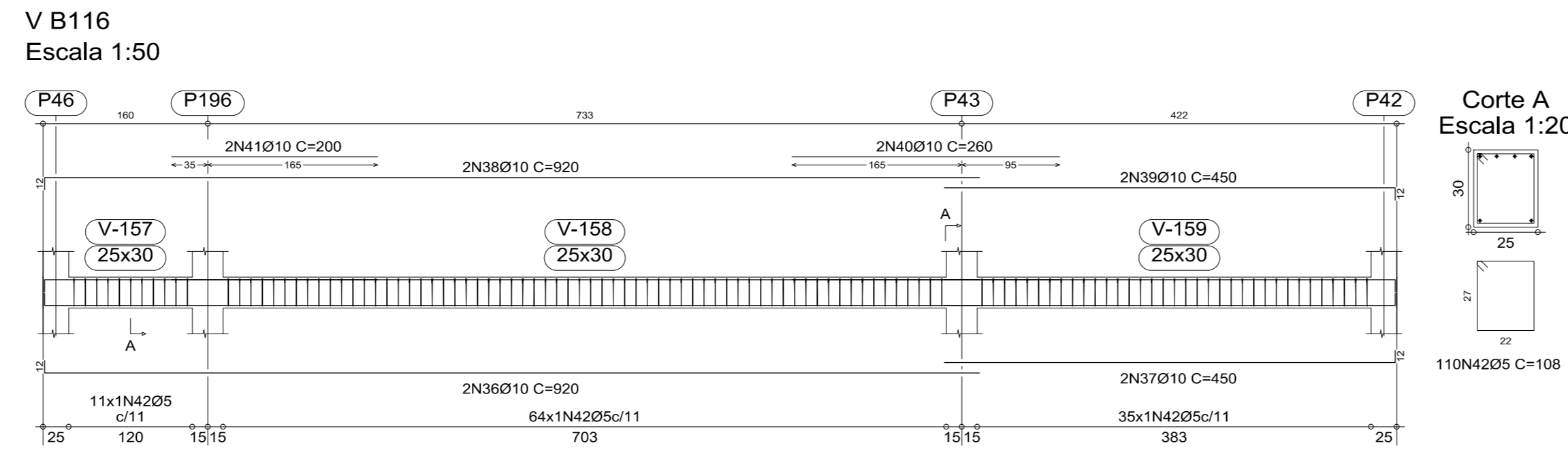
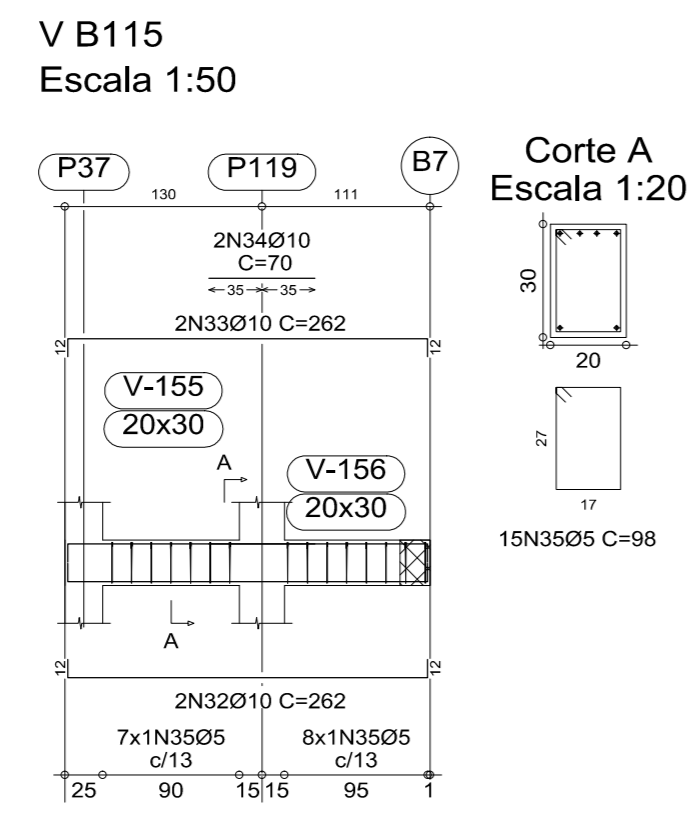
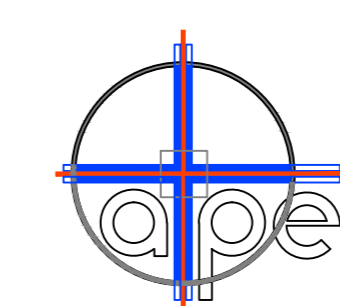


Elemento	Pos.	Diam.	Q	Do.	Ret.	Do.	Comp.	Total	CA-50-A	CA-60-B
				(cm)	(cm)	(cm)	(cm)	(cm)	(Kg)	(Kg)
V B111										
1	010	2	1070	1070			1070	2140	13,4	
2	010	2	1053	1053			1053	2106	13,4	
3	010	2	860	860			860	1720	10,7	
4	010	2	860	860			860	1720	10,7	
5	010	2	1070	1070			1070	2140	13,4	
6	010	2	1053	1053			1053	2106	13,4	
7	010	2	980	980			980	1960	12,3	
8	010	2	420	420			420	840	5,3	
9	010	2	235	235			235	470	3,0	
10	010	2	230	230			230	460	2,9	
11	010	2	215	215			215	430	2,7	
12	010	2	180	180			180	360	2,3	
13	05	291		108	31428					49,3
Total+10%									116,1	54,2
V B112										
14	010	2	1053	1053			1053	2106	13,4	
15	010	2	876	876			876	1752	11,1	
16	010	2	1053	1053			1053	2106	13,4	
17	010	2	576	576			576	1152	7,4	
18	010	4	230	230			230	460	2,9	
19	05	136		108	14904					23,4
Total+10%									52,1	25,7
V B113										
20	010	2	808	808			808	1616	10,1	
21	010	2	434	434			434	868	5,6	
22	010	2	808	808			808	1616	10,1	
23	010	2	434	434			434	868	5,6	
24	010	2	260	260			260	520	3,3	
25	010	2	200	200			200	400	2,5	
26	05	65		98	6370					10,0
27	05	35		108	3780					5,9
Total+10%									44,3	17,5
V B114										
28	010	2	236	236			236	472	3,3	
29	010	2	70	70			70	140	0,9	
30	010	2	236	236			236	472	3,3	
31	05	15		98	1470					2,3
Total+10%									8,0	2,5
V B115										
32	010	2	238	238			238	476	3,3	
33	010	2	70	70			70	140	0,9	
34	010	2	238	238			238	476	3,3	
35	05	15		98	1470					2,3
Total+10%									8,3	2,5
V B116										
36	010	2	808	808			808	1616	10,1	
37	010	2	434	434			434	868	5,6	
38	010	2	808	808			808	1616	10,1	
39	010	2	434	434			434	868	5,6	
40	010	2	260	260			260	520	3,3	
41	010	2	200	200			200	400	2,5	
42	05	110		108	11880					18,7
Total+10%									44,4	20,6
V B117										
43	010	2	172	172			172	344	2,5	
44	010	2	172	172			172	344	2,5	
45	05	10		98	980					1,5
Total+10%									5,5	1,7
V B118										
46	010	2	304	304			304	608	4,1	
47	010	2	110	110			110	220	1,4	
48	010	2	304	304			304	608	4,1	
49	05	22		98	2156					3,4
Total+10%									10,0	3,7
V B119										
50	010	2	1167	1167			1167	2334	15,0	
51	010	2	1167	1167			1167	2334	15,0	
52	010	2	200	200			200	400	2,5	
53	05	99		108	10692					16,8
Total+10%									36,8	16,5
									0,0	146,9
									0,0	0,0
									0,0	325,8
									0,0	146,9



BALDRAME:
Desenho de vigas
Concreto: C20, em geral
Aço: CA-50-A e CA-60-B
Escala vigas: 1:50
Escala seções: 1:20

REVISÕES			PARA APROVAÇÃO		DATA	ORÇAMENTO
NR.	AUTOR	DATA	ASS.	DATA	01618	
X	LIBERADO P/ FABRICAÇÃO		ASS. ENG. REINALDO	DATA	16/08/2010	



ASSESSORIA TÉCNICA DE PLANEJAMENTO
E ENGENHARIA
HOSPITAL DAS CLÍNICAS
UNESP - Campus de Botucatu - Distrito de Rubião Junior, S/N
BOTUCATU, SP - CEP 13.618-000
FONE (014) 3811-0050 - E-MAIL: atpe@fmb.unesp.br

Hospital das Clínicas
Distrito de Rubião Junior, s/n | CEP 13618-000 | Botucatu | São Paulo
Tel: (14) 3811-0050 | 3811-4211 | 3811-0052 | www.hc.unesp.br

SENA AMPLIAÇÃO DO AMBULATORIO MÉDICO DE ESPECIALIDADES
LOCAL: HOSPITAL DAS CLÍNICAS - BOTUCATU
PROPOSTA: ARMAÇÃO DO BALDRAME- SETOR B- COTA 96.40